



Stellar Phoenix Excel Recovery

Version 4.1

User Guide

Overview

Stellar Phoenix Excel Recovery is designed to repair corrupt Microsoft Excel (.xls and .xlsx) files. This software scans all selected Excel files and uses an advanced algorithm to restore Excel files back to their original state. The recovered files can either be saved to their original location on the hard disk, or to any user-specified location.

You can search for corrupt/damaged Excel files in folders and drives. You can preview the repaired Excel files before saving to a location and save the files to original location or specific location.

What is new in this version?

- New user friendly interface
- Recovers user defined chart.
- Recovers Chartsheet.
- Recovers Chart Formatting.
- Recovers cell comment (for binary format).
- Recovers Series trendline.
- Recovers Conditional formatting rules.
- Recovers worksheet property (freeze panes, split, gridlines, and formula bar).
- Recovers sort and filter setting.
- Recovers group and subtotal.

Other Features of Stellar Phoenix Excel Recovery

- Recovers images, charts and engineering formulas
- Recovers same height of rows and columns
- Recovers all Cell Comments (for Excel 2007, Excel 2010 only)
- Recovers all merge cells
- Recovers all hidden sheets and columns
- Recovers all shared formulas

- Recovers all text, numbers and tables from original Excel sheet
- Preserves formatting when restoring files
- Recovers all embedded functions from the original Excel sheet
- Supports MS Excel 2000, 2003, 2007, and 2010
- Compatible with Windows NT/ 2000/ XP/ 2003/ Vista /Windows 7

Getting Started

Excel Recovery software provides you preview, search and recover options for performing recovery of Excel files. The user interface of Excel Recovery software is easy to use and anyone can use it without any technical knowledge. You can start recovering Microsoft Excel files after installing the Excel Recovery software.

- Installation Procedure
- Order and Register
- User Interface

Installation Procedure

Before installing the software, ensure that your computer meets the minimum system requirements to install Stellar Phoenix Excel Recovery software.

- **Minimum System Requirements**

Processor :Pentium Class

Operating System: Windows NT / 2000 / XP / Vista / Windows 7

Memory :256 MB recommended

Hard Disk :50 MB of free space

MS Excel: 2000 / 2003 / 2007 / 2010

To install the software:

1. Double-click **StellarPhoenixExcelRecovery.exe** file to open the Stellar Phoenix Excel Recovery Setup Wizard. Click **Next**.
2. On the Specify Destination Location screen, specify the destination where Stellar Phoenix Excel Recovery software should be installed. Click **Next**.
3. On the Select Start Menu Folder screen, specify the destination where program shortcuts should be stored. Click **Next**.
4. On the Select Additional Tasks screen, check the check boxes of required icons. Click **Next**.
5. On the Ready to Install screen, click **Install**.
6. Click **Finish** to exit setup wizard.



Stellar Phoenix Excel Recovery

Order and Register

You can purchase the software online. For price details and to place the order, click <http://www.stellarinfo.com/file-repair/excel-repair/buy-now.php>.

On confirmation of order, a pre-paid serial number is sent to you through e-mail that would be required to register the software.

Register Stellar Phoenix Excel Recovery:

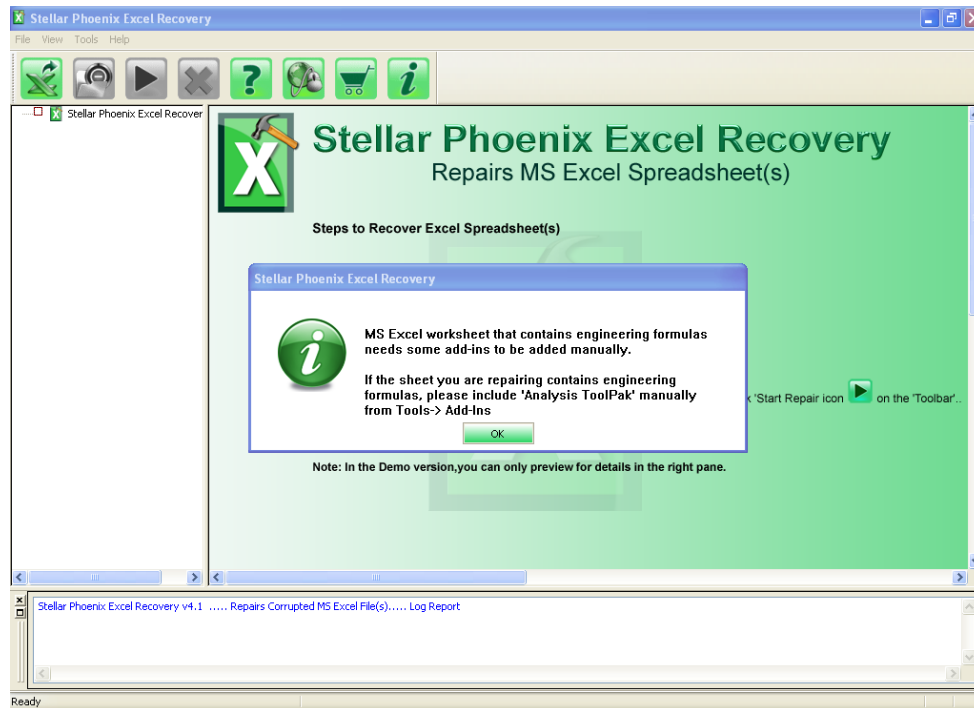
After receiving the **Registration Key**, the software can be activated.

To register the software:

- Run demo version.
- On the Tools menu, Click **Activate Stellar Phoenix Excel Recovery**.
- Type Name and Key. Click **OK**.

User Interface

The main user interface of Stellar Phoenix Excel Recovery is as shown below.



Toolbar

Toolbar of Stellar Phoenix Excel Recovery consists of the given below tools:

- **Add File to Tree View**



Opens Stellar Phoenix Excel Recovery box, which allows you to select Microsoft Excel file. In addition, you can search files by using this dialog box.

- **Remove File(s) from Tree View**



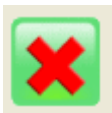
Removes files that are checked from the tree

- **Start Repair**



Starts recovering files

- **Stop**



Stops an ongoing repairing process

- **Stellar Phoenix Excel Recovery Help**



Opens help manual of the software

- **Updates**



Download latest updates of the software

- **Purchase Stellar Phoenix Excel Recovery Online**



Shows links from where you can buy the software

- **About Stellar Phoenix Excel Recovery**



Shows general information about the software

Menubar

These are the menus and items in the Stellar Phoenix Excel Recovery software.

- **File**
 - **Add File to Tree View:** To add Excel files to the tree view
 - **Remove from Tree:** To remove selected files from the tree view
 - **Start Repair:** To start the repairing process
 - **Stop:** To stop a process
 - **Exit:** To quit the application

- **View**
 - **Toolbar:** Show/Hide the toolbar
 - **Status bar:** Show/Hide the Status bar
 - **Message Log:** Show/Hide the Message bar

- **Tools**
 - **Save Log:** To save the log information
 - **Clear Log:** To clear the log information

- **Help**
 - **Stellar Phoenix Excel Recovery help:** Opens the user guide
 - **Purchase Stellar Phoenix Excel Recovery Online:** Purchase details of the product
 - **Activate Stellar Phoenix Excel Recovery:** Purchase details of the product
 - **View Support Section:** Opens Stellar support section webpage
 - **Visit Knowledge Base:** Opens knowledge base article webpage
 - **Submit Enquiry:** Opens the login page, to submit a case
 - **Updates:** To open update wizard for live updates
 - **About Stellar Phoenix Excel Recovery:** Generic information about the product

Features

Stellar Phoenix Excel Recovery has many features incorporated in it. It has a very interactive user-interface and fast scanning process. It recovers damaged excel files quickly and efficiently. Along with all these features file repaired by Stellar Phoenix Excel Recovery can also be viewed before saving it. The main features of Stellar Phoenix Excel Recovery can be stated as follows:

- Preview Excel Files
- Log Report

Preview Excel Files

Stellar Phoenix Excel Recovery software gives an option to preview the repaired file before finally saving it. If your software is demo version then also you can only see the preview of the Excel file. You have to register the demo version to recover your Excel file.

To know how to preview the damaged Excel file visit [Preview of Damaged Excel Files](#) topic of this help manual.

Log Report



Stellar Phoenix Excel Recovery saves a log report of the recovery process. Log file helps user to examine the time taken in repair process, path of the saved database file etc.

If another file is repaired then log report of that repair process is concatenated in the previous log report. New log is written below the previous log. This log report can be saved for future reference. View Log Report section of this user manual describes viewing and saving of log file in detail.

Repair Excel Files

You can recover individual Excel file using Stellar Phoenix Excel Recovery. The software allows you to save file to your preferred location.

To recover Microsoft Excel file:

1. Click  icon on the toolbar or select **Add file to tree view** on the File menu.
2. In the Stellar Phoenix Excel Recovery box, select a corrupted .xls or .xlsx file by clicking on **Select File** button. To search for .xls or .xlsx file, click on **Search File (s)** button.
3. When **Search File (s)** option is selected, the list of files found is displayed in Stellar Phoenix Excel Recovery box. Check mark the check boxes of the files that need to be scanned and click on **Scan** button. The list of the files need to be recovered will be displayed in tree view in the left pane. Select the file you wish to recover.
4. Click  icon on the tool bar or select **Start repair** in File menu. In the Save Document dialog box, select **Default location of file** or **Select New Folder**. Former will save the file to its original location where it was earlier saved. Latter allows you to specify a new destination to save the recovered Excel file.
5. Click **OK**. Selected file is recovered and saved at the specified location.

Note: You can also select **Preview** and **Start Repair** option by right-clicking a file under the tree.

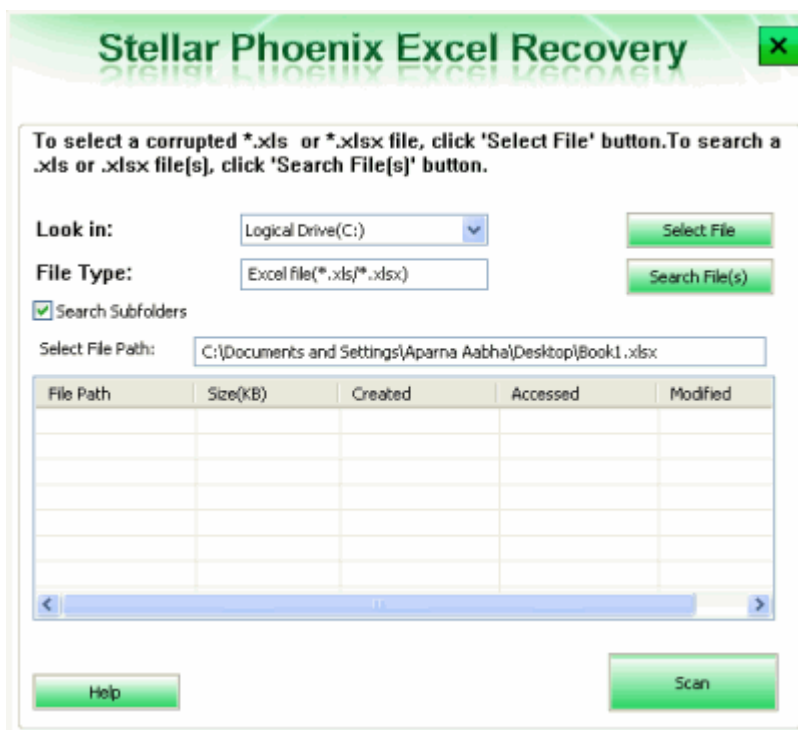
Select Excel File

You can select Excel file from a specified volume in the Excel Recovery software.

To select file:



Click  icon on the tool bar, or select **Add File to Tree View** on **File** menu. **Stellar Phoenix Excel Recovery** dialog box will open.



Stellar Phoenix Excel Recovery

To select a corrupted *.xls or *.xlsx file, click 'Select File' button. To search a .xls or .xlsx file(s), click 'Search File(s)' button.

Look in: Logical Drive(C:)

File Type: Excel file(*.xls/*.xlsx)

Search Subfolders

Select File Path: C:\Documents and Settings\Aparna Aabha\Desktop\Book1.xlsx

File Path	Size(KB)	Created	Accessed	Modified


In this dialog box, specify the drive in **Look in** box and click **Select File** button to locate and select the required Excel file.

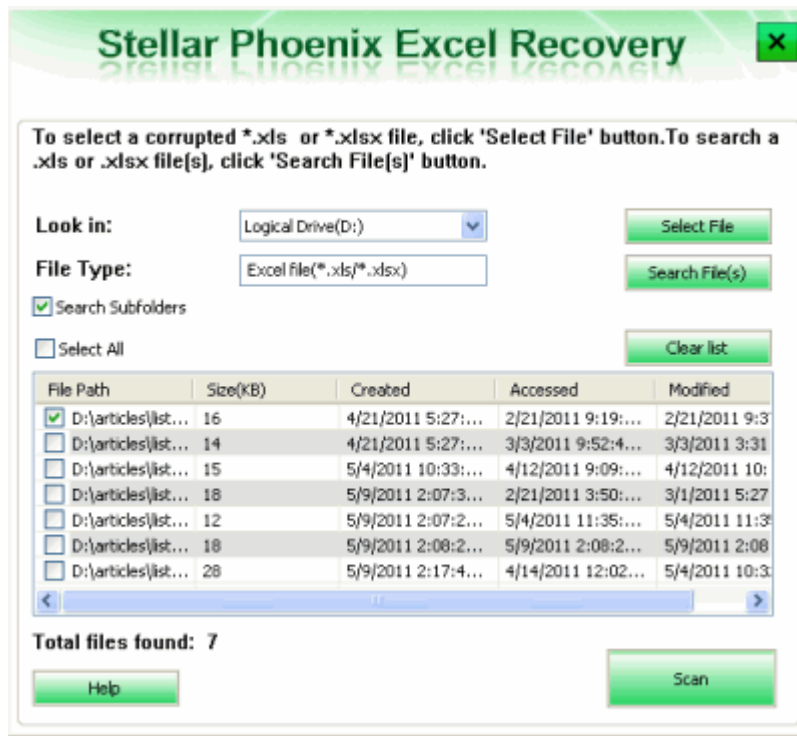
Search Excel Files

You can search for Microsoft Excel files in your computer by using search option of the software in case you are unaware of the exact location of required file.

To search files:



Click  icon. In the Stellar Phoenix Excel Recovery dialog box, specify the drive in **Look in** box and click **Search File(s)** button.



The application will start searching for .xls or .xlsx files. Once the search is finished, all files found are listed in the Stellar Phoenix Excel Recovery box.

Preview Damaged Excel File

Stellar Phoenix Excel Recovery shows preview of corrupt Excel files that helps you to evaluate files before repairing. If you want to preview a damaged Excel file, double-click the required file in the tree view

To preview the file:

- Double-click file in the left pane.
- Right-click a file from the Stellar Phoenix Excel Recovery tree and select **Preview**.

The screenshot displays the Stellar Phoenix Excel Recovery application window. The main area is a spreadsheet showing a list of applications and their recovery status. The columns are labeled S. No., Application, Planned Date, Release Date, and New Planned Date. The data is organized by month: July 2010, August 2010, and September 2010. The application 'Stellar Phoenix Compact PST' is highlighted in yellow.

S. No.	Application	Planned Date	Release Date	New Planned Date
July 2010				
1	Stellar Phoenix Quick Book Recovery v1.5	15th July	15th July	
2	Stellar Phoenix Database repair for MySQL	15th July	15th July	
3	Registry Manager	15th July	15th July	
4	Oracle Recovery	31st July	27th July	
5	Excel Password Recovery	31st July	Delayed	7th September
6	Word Password Recovery	31st July	Delayed	15th December
7	PowerPoint Password Recovery	31st July	Delayed	15th October
8	Access Password Recovery	31st July	Delayed	6th September
9	Mail Password Recovery	31st July	30th July	
August 2010				
10	Zip Password Recovery	10th August		6th September
11	Stellar Drive Toolbox	10th August	10th August	
12	Stellar Phoenix Sun Solaris v2.0	16th August	16th August	
13	SharePoint Server Recovery 1.0	16th August	16th August	
14	Stellar InstaBackup Oid	16th August	Delayed	30th October
15	Stellar Phoenix Exchange Server Recovery	31st August	31st August	
16	Stellar Phoenix NSF Recovery	31st August	31st August	
17	Embarca Repair	31st August	21st August	
September 2010				
18	Stellar Phoenix Excel Repair	15th September	Delayed	30th October
19	Stellar Phoenix Word Recovery	15th September	Delayed	30th September
20	Stellar Phoenix Compact PST	30th September		
21	Backup PST	30th September	Delayed	30th November
22	Stellar Wipe v4.0	30th September		
23	Stellar C-D-DVD Recovery v4.0	30th September		
24	Volume Manager for Mac	30th September		

At the bottom of the window, a log report is visible:

```
Stellar Phoenix Excel Recovery v4.0 ..... Repair Corrupted MS Excel File(s)..... Log Report
Repair process started on Monday, November 29, 2010, 10:27:45 AM
File selected for repair: C:\Documents and Settings\Administrator\Desktop\backups\Revised_Releases_Cal.xls
```


Remove Files

You can remove files from the Stellar Phoenix Excel Recovery. If some files are added that are not required then you can remove these files without exiting the Excel Recovery software.

To remove files:

1. Check mark the check boxes of files that need to be removed.



2. Click  icon from tool bar or on the File menu, select **Remove from Tree**. All selected files will be removed.



Note: By default, all files are checked when you add files in the tree. If you click Remove files from tree icon all files will be removed. Therefore, ensure that you checked or cleared the check boxes of required file.

View Log Report

Log window shows the progress of the current process. The log window displays messages indicating the beginning of the process, end of the process, name of the corrupt file.

- **To enable log window**
 - On the View menu, select **Message log**
- **To save log information**
 - On the Tools menu, select **Save Log**. In the Save As dialog box, specify the destination where log file should be saved. Click **Save**.
- **To clear log information**
 - On the Tools menu, select **Clear Log**.

Copyright

Stellar Phoenix Excel Recovery software, accompanied user manual and documentation are copyright of Stellar Information Systems Ltd., with all rights reserved. Under the copyright laws, this user manual cannot be reproduced in any form without the prior written permission of Stellar Information Systems Ltd. No Patent Liability is assumed, however, with respect to the use of the information contained herein.

Copyright © 1995-2011 by Stellar Information Systems Ltd. INDIA

Disclaimer

The Information contained in this manual, including but not limited to any product specifications, is subject to change without notice.

STELLAR INFORMATION SYSTEMS LTD PROVIDES NO WARRANTY WITH REGARD TO THIS MANUAL OR ANY OTHER INFORMATION CONTAINED HEREIN AND HEREBY EXPRESSLY DISCLAIMS ANY IMPLIED WARRANTIES OF MERCHANTABILITY OR FITNESS FOR ANY PARTICULAR PURPOSE WITH REGARD TO ANY OF THE FOREGOING STELLAR INFORMATION SYSTEMS LTD ASSUMES NO LIABILITY FOR ANY DAMAGES INCURRED DIRECTLY OR INDIRECTLY FROM ANY TECHNICAL OR TYPOGRAPHICAL ERRORS OR OMISSIONS CONTAINED HEREIN OR FOR DISCREPANCIES BETWEEN THE PRODUCT AND THE MANUAL. IN NO EVENT SHALL STELLAR INFORMATION SYSTEMS LTD, BE LIABLE FOR ANY INCIDENTAL, CONSEQUENTIAL SPECIAL, OR EXEMPLARY DAMAGES, WHETHER BASED ON TORT, CONTRACT OR OTHERWISE, ARISING OUT OF OR IN CONNECTION WITH THIS MANUAL OR ANY OTHER INFORMATION CONTAINED HEREIN OR THE USE THEREOF.

License Agreement

Stellar Phoenix Excel Recovery

Copyright © 1995-2011 by Stellar Information Systems Ltd. INDIA

www.stellarinfo.com

All rights reserved.

All product names mentioned herein are the trademarks of their respective owners.

This license applies to the standard-licensed version of Stellar Phoenix Excel Recovery.

Your Agreement to this License

You should carefully read the following terms and conditions before using, installing or distributing this software, unless you have a different license agreement signed by Stellar Information Systems Ltd.

If you do not agree to all of the terms and conditions of this License then do not copy, install, distribute or use any copy of Stellar Phoenix Excel Recovery with which this License is included, you may return the complete package unused without requesting an activation key within 30 days after purchase for a full refund of your payment.

The terms and conditions of this License describe the permitted use and users of each Licensed Copy of Stellar Phoenix Excel Recovery. For purposes of this License, if you have a valid single-user license, you have the right to use a single Licensed Copy of Stellar Phoenix Excel Recovery. If you or your organization has a valid multi-user license, then you or your organization has the right to use up to a number of Licensed Copies of Stellar Phoenix Excel Recovery equal to the number of copies indicated in the documents issued by Stellar when granting the license.

Scope of License

Each Licensed Copy of Stellar Phoenix Excel Recovery may either be used by a single person or used non-simultaneously by multiple people who use the software personally installed on a single workstation. This is not a concurrent use license.

All rights of any kind in Stellar Phoenix Excel Recovery, which are not expressly granted in this license, are entirely and exclusively reserved to and by Stellar Information Systems Ltd. You may not rent, lease, modify, translate, reverse engineer, decompile, disassemble or create derivative works based on Stellar Phoenix Excel Recovery nor permit anyone else to do so. You may not make access to Stellar Phoenix Excel Recovery available to others in connection with a service bureau, application service provider or similar business nor permit anyone else to do so.

Warranty Disclaimers and Liability Limitations

Stellar Phoenix Excel Recovery and all accompanying software, files, data and materials are distributed and provided AS IS and with no warranties of any kind, whether expressed or implied. You acknowledge that good data processing procedure dictates that any program including Stellar Phoenix Excel Recovery must be thoroughly tested with non-critical data before there is any reliance on it and you hereby assume

the entire risk of all use of the copies of Stellar Phoenix Excel Recovery covered by this License. This disclaimer of warranty constitutes an essential part of this License. In addition, in no event does Stellar authorize you or anyone else to use Stellar Phoenix Excel Recovery in applications or systems where its failure to perform can reasonably be expected to result in a significant physical injury or in loss of life. Any such use is entirely at your own risk and you agree to hold Stellar harmless from any and all claims or losses relating to such unauthorized use.

In no event shall Stellar Information Systems Limited or its suppliers be liable for any special, incidental, indirect, or consequential damages whatsoever (including, without limitation, damages for loss of business profits, business interruption, loss of business information, or any other pecuniary loss) arising out of the use of or inability to use the software product or the provision of or failure to provide support services, even if Stellar Information Systems Limited has been advised of the possibility of such damages. In any case, Stellar Information Systems Limited's entire liability under any provision shall be limited to the amount actually paid by you for the software product.

General

This License is the complete statement of the agreement between the parties on the subject matter and merges and supersedes all other or prior understandings, purchase orders, agreements and arrangements. This License shall be governed by the laws of the State of Delhi, India. Exclusive jurisdiction and venue for all matters relating to this License shall be in courts and fora located in the State of Delhi, India and you consent to such jurisdiction and venue. There are no third party beneficiaries of any promises, obligations or representations made by Stellar herein. Any waiver by Stellar of any violation of this License by you shall not constitute nor contribute to a waiver by Stellar of any other or future violation of the same provision or any other provision of this License.

Copyright © 1995-2011 by Stellar Information Systems Ltd. All rights reserved.

Trademarks

Stellar Phoenix Excel Recovery® is a registered trademark of Stellar Information Systems Ltd.

Windows 2000®, 2003®, XP®, Windows Vista®, and Windows 7 are registered trademarks of Microsoft® Corporation Inc.

All Trademarks Acknowledged.

All other brands and product names are trademarks or registered trademarks of their respective companies.

Technical Support

Our Technical Support professionals will give solutions for all your queries related to Stellar Products.

You can either Call Us or Go Online to our support section <http://www.stellarinfo.com/support>

Support Helpline

Monday to Friday [24 Hrs. a day]

USA (Tollfree- Pre Sales Queries)	+1-877-778-6087
USA (Post Sales Queries)	+1-732-584-2700
UK (Europe)	+44-203-026-5337
Australia & Asia Pacific	+61-280149899
Netherlands Pre & Post Sales Support	+31-208-111-188
Worldwide	+91-921-395-5509
Skype Id	stellarsupport
Email Orders	orders@stellarinfo.com

Online Help

- [Chat Live](#) with an Online technician

- Search in our extensive [Knowledge Base](#)
- [Submit Enquiry](#) (If our Knowledge Base does not answer your question)

About Stellar

Stellar Information Systems Ltd. is a trusted name in the field of Data Recovery and Data Protection Software for more than a decade.

We provide the widest range of Data Recovery Products. Our range includes Data Recovery Software for almost all Operating Systems and File Systems.

Product line:

Data Recovery

A widest range of data recovery software that helps you recover your valued data lost after accidental format, virus problems, software malfunction, file/directory deletion, or even sabotage!. [More Info >>](#)

File Recovery

The most comprehensive range of file undelete and unerase software for Windows and MS office repair tools. [More Info >>](#)

Email Recovery

A wide range of mail recovery, mail repair and mail conversion applications for MS Outlook, MS Outlook Express and MS Exchange useful in instances of data loss due to damages and corruption of E-mail. [More Info >>](#)

Data Protection

A wide range of Prevent Data Loss, Data backup and Hard Drive Monitoring Applications to ensure complete data protection against hard drive crash. [More Info >>](#)

For more information about us, please visit www.stellarinfo.com

FAQs

What is Stellar Phoenix Excel Recovery?

Stellar Phoenix Excel Recovery is designed to recover corrupted Microsoft Excel (.xls and .xlsx) files. This software scans all selected Excel files and uses an advanced algorithm to restore Excel files back to their original state. The recovered files can either be saved to their original location on the hard disk, or to any user-specified location.

I have forgotten the path of my Excel file. Can I search the Excel file using the application?

Yes, Excel files can be searched in a drive or a specified folder. Click 'Search File(s)' option in the Stellar Phoenix Excel Recovery application and follow the process.

What are the limitations of the demo version of the software?

Demo version of software is just to show you the possibility of repair. If you are satisfied with the demo then you can purchase full version of software. You can repair corrupted file with full version software.

How much time the Stellar Phoenix Excel Recovery will take to repair the file?

The scanning time depends upon the corruption level, size and number of Excel sheets. If the process is running that means that software is still scanning the corrupted file and you have to wait for scanning process to complete. Once scanning is complete you will get the recovered file at destination location.

I want to analyze the recovery process. Can I see the log report at a later stage?

Yes, the application gives you option to save and view log report at a later stage. To save log report,

- On the Tools menu, click 'Save Log'.
- Log report is saved at the specified location in text format.
- To view the report, visit the location and open the file.