

# **Stellar Phoenix Novell (NWFS)**

# Table of Contents

Overview .....	2
Getting Started.....	3
System Requirements.....	4
Installation Procedure.....	5
Configuring Default Options .....	6
Order and Register .....	7
How to Order.....	8
How to Register.....	9
User Interface .....	16
Menu Bar.....	17
ToolBar .....	21
Log Window .....	22
Using the Software.....	23
Legal Notices.....	24
Copyright.....	25
Disclaimer.....	26
License Agreement.....	27
Technical Support.....	30
Support Helpline .....	30
Online Help .....	30
About Stellar.....	32



## **Stellar Phoenix Novell (NWFS)**

Version 3.0

### **Installation Guide**



## Overview

Stellar Phoenix Novell (NWFS) software recovers data from corrupt volume(s) of a crashed Server. This software is easy and simple to use, and very robust for all kinds of hard drives for Novell Network Partition and Data Recovery.

Stellar Phoenix Novell (NWFS) enables you to access data when volume(s) cannot be mounted. Stellar Phoenix Novell (NWFS) - software can save data to another drive in cases of corrupt volume(s), missing volumes, deleted files, allocation errors and partition loss.

### Key Features:

- Novell recovery when the important file data structure(s) has(have) got damaged
- Novell Network Recovery when the volumes are segmented
- Support Multi-Disk Drive- IDE, EIDE and SCSI
- Data recovery even when the Vrepair fails to perform its task
- Recover data from sub allocated data volumes
- Recovery from compressed file and directories is possible
- Interactive user interface with non-demanding nature of prior technical skills
- Structured phase wise analysis for the effective Novell partition recovery
- File Masking
- Disk Imaging
- Save scan
- Search Lost Volume
- File Filter
- Save data in FTP
- Save data in Archive mode
- Marked Compressed files



## **Getting Started**

Stellar Phoenix Novell (NWFS) software recovers data from network partitions. It supports Novell Network 3.1 and later and Traditional Volumes (NWFS). This software provides you three different linking modes.

You can apply filter to search for files in a network partition. In addition, you can find file from the recovered files and apply mask to narrow the search result.

You can also recover compressed data from network partitions.

- [System Requirements](#)
- [Installation Procedure](#)
- [User Interface](#)
- [Order and Register](#)



## **System Requirements**

These are the minimum system requirements:

- **Operating System:** Windows 2000, Windows XP and Windows Vista
- **RAM:** Minimum 128Mb (Recommended 256 Mb)

## **Supported Novell NetWare Versions**

- Novell Netware 3.1 and later

## **Supported Novell NetWare File System(s)**

- Traditional Volumes (NWFS)

## **System Requirement for un-compressing Compressed Data**

- Novell NetWare server preferably with same version or a higher release
- Novell Client with Netware Logon configured
- A separate hard disk to store compressed data(might require)

**Note:** The hard disk of the working machine will be used to save the data recovered from the crashed drive.



## Installation Procedure

Attach the crashed hard disk as per the instructions mentioned in previous sections, run setup.exe from Stellar Phoenix software CDROM or diskette. If you have downloaded Stellar Phoenix from [www.stellarinfo.com](http://www.stellarinfo.com) or from a download engine, run the application stelnet.exe file from windows explorer to begin the installation process on the working machine.

Set up launches the installation wizard; follow the steps of the wizard. Create a desktop shortcut and create an entry in program groups menu. The default path where software is installed is C:\Program Files\Stellar Phoenix Novell\

### Notes:

- Install Stellar Phoenix Novell (NWFS) in a different partition other than the partition from which you are trying to recover data. Since installing on the same partition may result in overwriting of lost data and can cause permanent damage.
- Ensure that you are logged in as administrator before initializing setup, as the software installation requires administrator rights in Windows NT/2000/XP.



## Configuring Default Options

You can configure the default options of the Stellar Phoenix Novell (NWFS) software to define properties that should be applied every time you start the software.

To configure default options of Stellar Phoenix Novell (NWFS):

- Click **Tools** and select **Advance Settings**. In the Advance Settings dialog box select the required options:
  - Check the **Check for Latest Updates at Startup** checkbox to receive latest update when you start the software.
  - Check the **Search for Known File Types (i.e. Signature Search) during Advance Scan** checkbox to search data according to known file types
  - Check the **Save Log Before Closing the Application** checkbox to save the log file of processes. Click Browse to specify the location where log files should be saved by default.
  - Specify the number of read attempts that should be taken while searching for data



## Order and Register

To know how to order and register:

- [How to Order?](#)
- [How to Register?](#)

## Stellar Phoenix Novell (NWFS)



Stellar Phoenix Novell (NWFS)

---

### How to Order

The software can be purchased by making payments online using a credit card. Please visit <http://www.stellarinfo.com/disk-recovery-prices-novell.htm> for more information and to place an order.

Alternatively, if the demo version is installed then you can register the demo version. To register the demo version click **Help** and select **Order Stellar Phoenix...** to start the registration process.

Once the payment is complete, an activation serial number along with activation details is sent through email. This activation serial number is required to register the software.




## How to Register

---



### Notes:

- If the software is downloaded from <http://www.stellarinfo.com/disk-recovery-prices-novell.htm> (i.e., ESD version), for the full functionality, the product must be activated using Serial Number (received through email after purchasing the product).
  - If the software is installed using the product installation CD (i.e., BOX version), hardware lock [  ] is mandatory for the functioning of the software which is available with the software kit.
- 

### To register the software:

- **Over Internet**

The product can be registered over the Internet after purchasing the serial number.

#### To register the software:

1. On the Menubar, click **Activation** and click **Activate Online**. The Stellar Phoenix Novell (NWFS) dialog box opens.
  2. Click **Yes**. The software checks for the Internet connection. After successful connection, software registration wizard will appear. Click **Next**.
- 



**Note:** If Internet connection is unavailable, user can also register the software by sending email. For more information click [here](#).

---

3. Click **Next**. Type the Serial number (received through email after purchasing the product) in the Serial number text box.

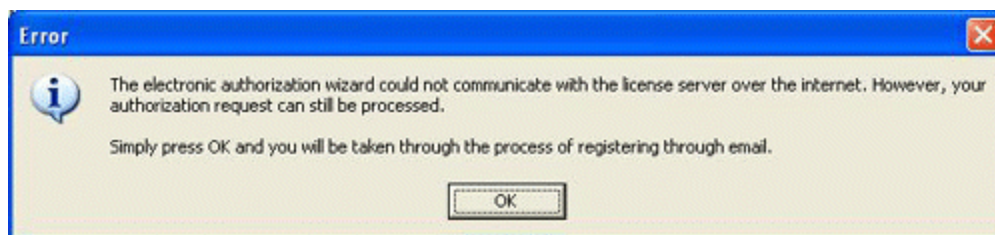
## Stellar Phoenix Novell (NWFS)



4. Click **Next**. The software would automatically communicate with registration server and would register the software. Click **Finish** to complete the registration process.

- **Using Email**

If the software could not communicate with the server, while registering the software over Internet, an error message pops up. Click **OK**, for registering through email.



### To register by using email:

1. The registration wizard for sending the authorization request opens.

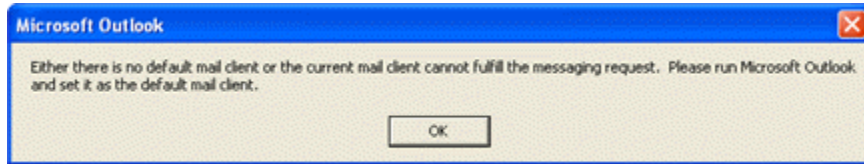


2. Leave the Manually send email checkbox option unchecked and click **Next**. Type the e-mail address in the text box to which the unlocking code has to be sent. Click **Next**.

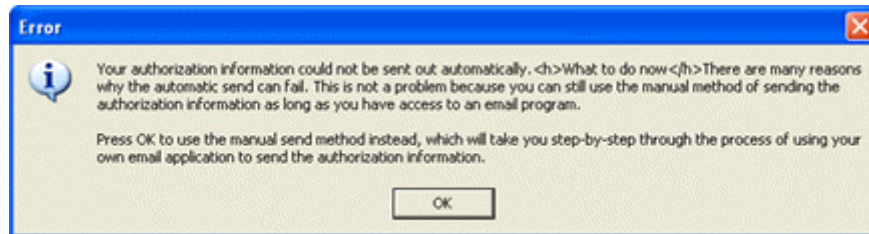


3. The email address verification window appears. Click **Yes**, if email address is correct. The software automatically launches the default email client, and sends an email containing the unique site code with registration request to the registration server. If the registration wizard could not launch the default email client, following messages appear.

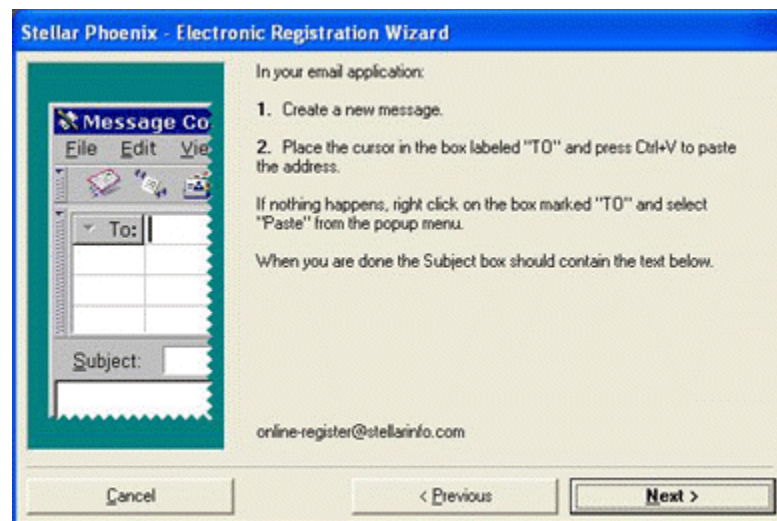
## Stellar Phoenix Novell (NWFS)



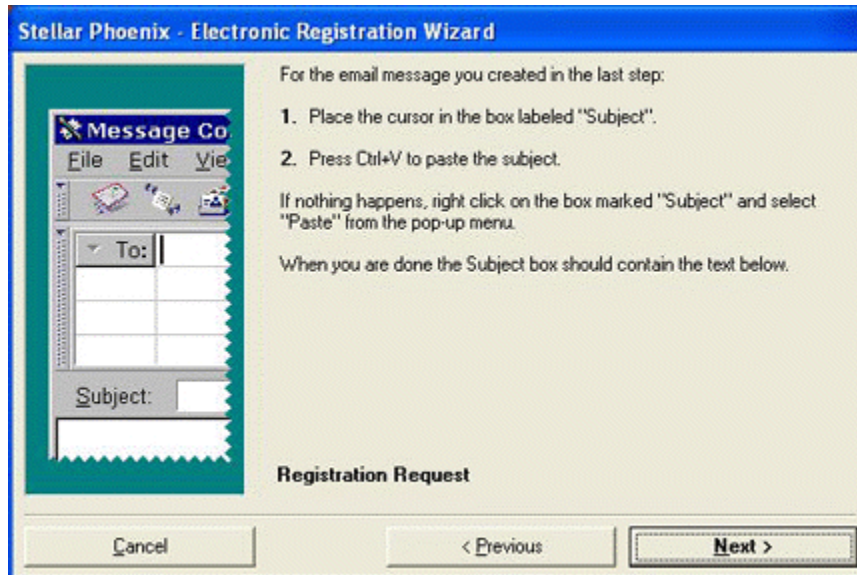
4. Click **OK**. The Error dialog box opens. Click **OK** to start the process manually.



5. The window shown below appears.

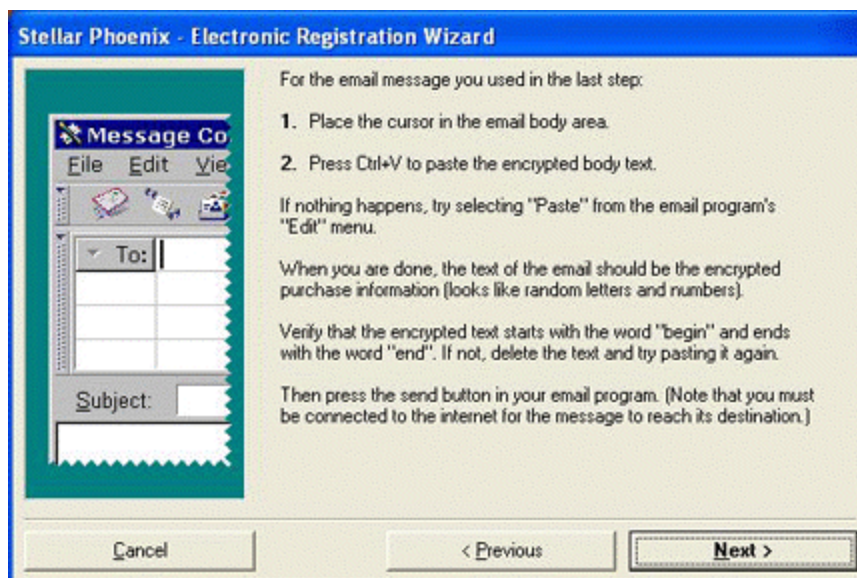


6. Open the email client such as, Outlook Express, MS outlook, Eudora and create a new message. Place the cursor in the box labeled To and press **CTRL+V** to paste address. If it does not work, right-click on the **To** box and select **Paste** from the popup menu. The To box will contain the address. Click **Next**.



7. Place the cursor in the box labeled Subject in the same message window and paste (method same as above) the text. The Subject box will contain the text.

8. Click **Next**, do the same process as mentioned to paste the encrypted text content in the body of the message.



9. Click **Next** to finish the procedure and send the email.



**Note:** Ensure that the content of the email sent for automatic authorization have

---

the details as mentioned above. If they are incorrect, the server will reject the mail registration request.

---

10. If the process is successful, following window will appear.



After processing the email, registration server would send an email containing unlocking code/site-key.



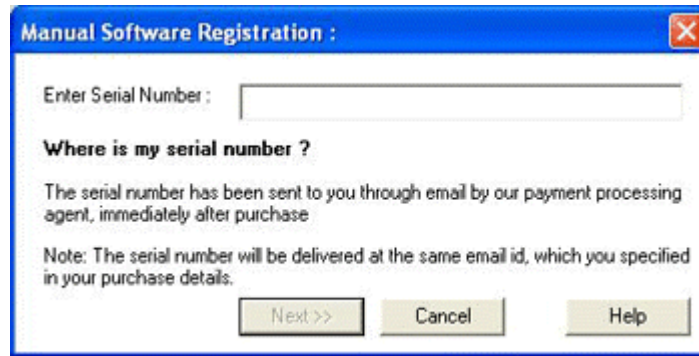
**Note:** In case wizard is not able to launch the default email client, it automatically shifts to the manual process for sending the activation authorization request.

---

- **Without Internet**

**To register without Internet connection:**

1. If the software is registered without Internet connection, following window pops up. Enter the Serial Number (received through email) and click **Next**.



2. Click **Finished** to complete the manual registration.

Manual registration is complete, software would create a PHX\_REG.txt file on the desktop. This file has to be mailed to register@stellarinfo.com. After verifying the details, the unlocking code/site key is sent through email.

**To register the software manually (after receiving the site-key):**

3. Click **Activation** and select **Manual Registration** in the Menubar.
4. Type the Site Key and click **Validate** to register the software.



**Note:** All Manual registration process will take maximum of one business day for completion.

---

## Stellar Phoenix Novell (NWFS)



Stellar Phoenix Novell (NWFS)

## User Interface

The main user interface of Stellar Phoenix Novell (NWFS) is as shown below:



View:

- [Menu Bar](#)
- [Toolbar](#)
- [Log Window](#)



## Menu Bar

Menu bar of Stellar Phoenix Novell (NWFS) consists of the following:

### Drives Menu

Show Drive List	To create drive tree using existing drive list
Refresh Drive List	To create and show drive list again
Open Drive Using Scan Information	To open the scan information saved before
Open Image File	To open the image file created by the software
Exit	To close the application

### File Menu

Recover All	To recover all files from the scan result
Recover Selected	To recover the selected files from the scan result
Add File Filter	To include or exclude files based on given criteria
Remove File Filter	To remove the filter

### Tools Menu

Stellar Phoenix Novell (NWFS)

Stop Current Process	To halt the current process
Save Scan Information	To save the scan result
Advance Settings	To set the advanced features
Find	To search files of a specific type from the scan result
Find Next	To select the next file of the type specified in the Find command
File Mask	To view/recover specific file types based on used-defined criteria
Show Original List	To generate the complete list of lost/deleted files in the tree structure
Select All	To check all the files in the tree structure
Unselect All	To clear all the check boxes
Save Log	To save log information
Clear Log	To clear log information
Change Current Linking Mode	To select the file type
File Preview	To view the file contents

**View Menu**

Toolbar	Show / Hide toolbar
Status bar	Show / Hide Status bar
Message Log	Show / Hide log window
Go Up	To go one level up to the parent directory of the selected folder
Large Icon / Small Icon / List / Details	To change the preview of the files in the right panel
Arrange	To arrange the files in the right panel by Name, Type, Size, Modified date, Created Date, Last accessed date and File ID

**Activation Menu**

Activate Online	To activate the software which has been purchased
Manual Registration	To register the software manually

**Help Menu**

Help Topic	To open user guide
Order Stellar Phoenix....	Purchase details of the product

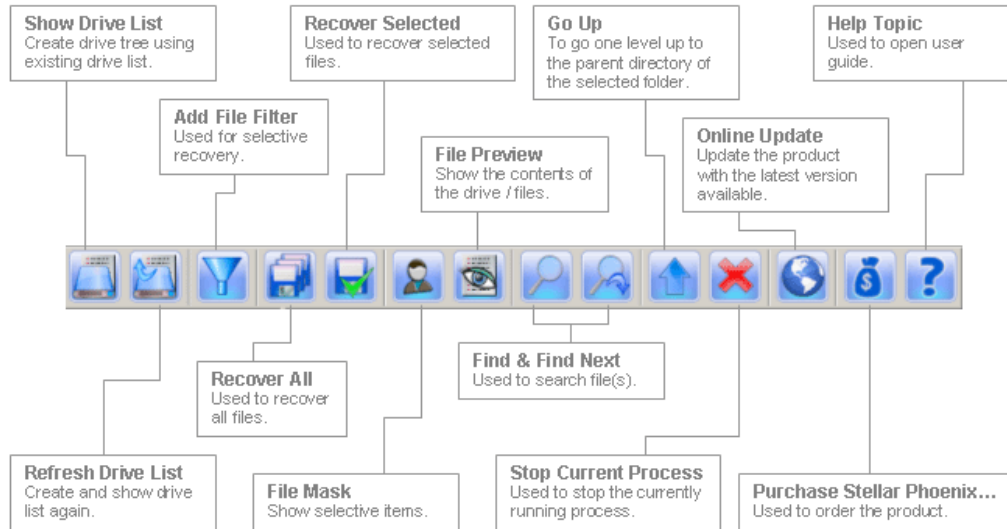
Stellar Phoenix Novell (NWFS)

Update Stellar Phoenix....	Opens the update wizard, to check for the latest version
Email Stellar Support	Opens the outlook express, to send the email
View Support Section	Opens Stellar support section webpage
View Knowledge base articles	Opens knowledge base article webpage
Generate a Ticket	Opens the login page, to submit ticket
Show Tip of the day	To view tip of the day.
About Stellar Phoenix....	To view the general information regarding the software



## Toolbar

The toolbar of Stellar Phoenix Novell (NWFS) consists of the tools as shown in figure below:





## Log Window

Log window is used to display useful information about ongoing activity. In Stellar Phoenix Novell (NWFS) log window displays - Activity, Description and Status.

To save the information shown in the log window, select **Save Log** on the Tool menu.

To clear the information from the log window, select **Clear Log** on the Tool menu.



**Stellar Phoenix Novell (NWFS)**

---

## **Using the Software**

Stellar Phoenix Novell (NWFS) has many options that help you to recover lost or deleted data from network partitions. This software recovers almost all data from corrupted volumes and allows you to save at either in local hard disk or to an FTP server.

In addition, you can create image of partitions or entire hard disk.

Stellar Phoenix Novell (NWFS)



Stellar Phoenix Novell (NWFS)

---

## **Legal Notices**

[Copyright](#)

[Disclaimer](#)

[Trademarks](#)

[License Agreement](#)



## **Copyright**

Stellar Phoenix Novell (NWFS) software, accompanied user manual and documentation are copyright of Stellar Information Systems Ltd., with all rights reserved. Under the copyright laws, this user manual cannot be reproduced in any form without the prior written permission of Stellar Information Systems Ltd. No Patent Liability is assumed, however, with respect to the use of the information contained herein.

**Copyright © 1995-2009 by Stellar Information Systems Ltd. INDIA**



## **Disclaimer**

The Information contained in this manual, including but not limited to any product specifications, is subject to change without notice.

**STELLAR INFORMATION SYSTEMS LTD PROVIDES NO WARRANTY WITH REGARD TO THIS MANUAL OR ANY OTHER INFORMATION CONTAINED HEREIN AND HEREBY EXPRESSLY DISCLAIMS ANY IMPLIED WARRANTIES OF MERCHANTABILITY OR FITNESS FOR ANY PARTICULAR PURPOSE WITH REGARD TO ANY OF THE FOREGOING STELLAR INFORMATION SYSTEMS LTD ASSUMES NO LIABILITY FOR ANY DAMAGES INCURRED DIRECTLY OR INDIRECTLY FROM ANY TECHNICAL OR TYPOGRAPHICAL ERRORS OR OMISSIONS CONTAINED HEREIN OR FOR DISCREPANCIES BETWEEN THE PRODUCT AND THE MANUAL. IN NO EVENT SHALL STELLAR INFORMATION SYSTEMS LTD, BE LIABLE FOR ANY INCIDENTAL, CONSEQUENTIAL SPECIAL, OR EXEMPLARY DAMAGES, WHETHER BASED ON TORT, CONTRACT OR OTHERWISE, ARISING OUT OF OR IN CONNECTION WITH THIS MANUAL OR ANY OTHER INFORMATION CONTAINED HEREIN OR THE USE THEREOF.**



Stellar Phoenix Novell (NWFS)

---

## **License Agreement**

Stellar Phoenix Novell (NWFS)

Copyright © 1995-2009 by Stellar Information Systems Ltd. INDIA

[www.stellarinfo.com](http://www.stellarinfo.com)

All rights reserved.

All product names mentioned herein are the trademarks of their respective owners.

This license applies to the standard-licensed version of Stellar Phoenix Novell (NWFS).

## **Your Agreement to this License**

You should carefully read the following terms and conditions before using, installing or distributing this software, unless you have a different license agreement signed by Stellar Information Systems Ltd.

If you do not agree to all of the terms and conditions of this License then do not copy, install, distribute or use any copy of Stellar Phoenix Novell (NWFS) with which this License is included, you may return the complete package unused without requesting an activation key within 30 days after purchase for a full refund of your payment.

The terms and conditions of this License describe the permitted use and users of each Licensed Copy of Stellar Phoenix Novell (NWFS). For purposes of this License, if you have a valid single-user license, you have the right to use a single Licensed Copy of Stellar Phoenix Novell (NWFS). If you or your organization has a valid multi-user license, then you or your organization has the right to use up to a number of Licensed Copies of Stellar Phoenix Novell (NWFS) equal to the number of copies indicated in the documents issued by Stellar when granting the license.

## **Scope of License**

Each Licensed Copy of Stellar Phoenix Novell (NWFS) may either be used by a single person or used non-simultaneously by multiple people who use the software personally installed on a single workstation. This is not a concurrent use license.

All rights of any kind in Stellar Phoenix Novell (NWFS), which are not expressly granted in this license, are entirely and exclusively reserved to and by Stellar Information Systems Ltd. You may not rent, lease, modify, translate, reverse engineer, decompile, disassemble or create derivative works based on Stellar Phoenix Novell (NWFS) nor permit anyone else to do so. You may not make access to Stellar Phoenix Novell (NWFS) available to others in connection with a service bureau, application service provider or similar business nor permit anyone else to do so.

## **Warranty Disclaimers and Liability Limitations.**

## Stellar Phoenix Novell (NWFS)

Stellar Phoenix Novell (NWFS) and all accompanying software, files, data and materials are distributed and provided AS IS and with no warranties of any kind, whether expressed or implied. In particular, there is no warranty for the quality of data recovered. You acknowledge that good data processing procedure dictates that any program including Stellar Phoenix Novell (NWFS) must be thoroughly tested with non-critical data before there is any reliance on it and you hereby assume the entire risk of all use of the copies of Stellar Phoenix Novell (NWFS) covered by this License. This disclaimer of warranty constitutes an essential part of this License.

In addition, in no event does Stellar authorize you or anyone else to use Stellar Phoenix Novell (NWFS) in applications or systems where its failure to perform can reasonably be expected to result in a significant physical injury or in loss of life. Any such use is entirely at your own risk and you agree to hold Stellar harmless from any and all claims or losses relating to such unauthorized use.

## General

This License is the complete statement of the agreement between the parties on the subject matter and merges and supersedes all other or prior understandings, purchase orders, agreements and arrangements. This License shall be governed by the laws of the State of Delhi, India. Exclusive jurisdiction and venue for all matters relating to this License shall be in courts and for a located in the State of Delhi, India and you consent to such jurisdiction and venue. There are no third party beneficiaries of any promises, obligations or representations made by Stellar herein. Any waiver by Stellar of any violation of this License by you shall not constitute nor contribute to a waiver by Stellar of any other or future violation of the same provision or any other provision of this License.

**Copyright ©1995-2009 by Stellar Information Systems Ltd. All rights reserved.**



Stellar Phoenix Novell (NWFS)

---

## **Trademarks**

Stellar Phoenix Novell Netware (NWFS)® is a registered trademark of Stellar Information Systems Ltd.

Novell Netware® is a registered trademark of Novell Inc.

Windows XP®, Windows 2000® and Windows Vista® are registered trademarks of Microsoft® Corporation Inc.

All Trademarks Acknowledged.

All other brands and product names are trademarks or registered trademarks of their respective companies.



## Technical Support

Our Technical Support professionals will give solutions for all your queries related to Stellar Products.

You can either Call Us or Go Online to our support section

<http://stellarinfo.com/esupport/users/kb.php>

---

### Support Helpline

**Monday to Friday [24 Hrs. a day]**

---

USA (Toll free - Pre Sales Queries)	1-866-554-2512
USA (Post Sales Queries)	1-315-220-6245
UK (Europe)	+44-207-993-2293
Germany	+49-180-110-105-0051
Worldwide	+91-921-395-5509
Skype Id	stellarsupport
Email Orders	orders@stellarinfo.com

---

### Online Help

- [Chat Live](#) with an Online technician
- Search in our extensive [Knowledge Base](#)
- [Submit Ticket](#) (If our Knowledge Base does not answer your question)

- Login and view [Ticket Status](#) (If you already have a valid Ticket with you)
- [Download Documents](#) on Product Usage ( For Registered members only, i.e, user with login ID. If you are an unregistered user, please visit <http://stellarinfo.com/esupport/users/login.php> to create login ID)



## About Stellar

Stellar Information Systems Ltd. is a trusted name in the field of Data Recovery and Data Protection Software for more than a decade.

We provide the widest range of Data Recovery Products. Our range includes Data Recovery Software for almost all Operating Systems and File Systems.

### Product line:

#### Data Recovery

A widest range of data recovery software that helps you recover your valued data lost after accidental format, virus problems, software malfunction, file/directory deletion, or even sabotage!

[More Info >>](#)

#### File Recovery

The most comprehensive range of file undelete and unerase software for Windows and MS office repair tools. [More Info >>](#)

#### Email Recovery

A wide range of mail recovery, mail repair and mail conversion applications for MS Outlook, MS Outlook Express and MS Exchange useful in instances of data loss due to damages and corruption of Email. [More Info >>](#)

#### Data Protection

A wide range of Prevent Data Loss, Data backup and Hard Drive Monitoring Applications to ensure complete data protection against hard drive crash. [More Info >>](#)

#### Data Sanitization

Data cleanup and file eraser utility can delete selected folders, groups of files, entire logical drives, System Traces & Internet traces. Once the data have been removed using Stellar Wipe - Data File eraser utility, it is beyond recovery limits of any Data Recovery Software or utility. [More Info >>](#)

For more information about us, please visit [www.stellarinfo.com](http://www.stellarinfo.com)

---