

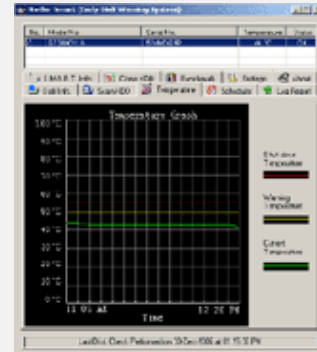
Stellar Smart

Monitor's Hard Drive Performance

Stellar Smart

Stellar Smart is a utility that acts as an "early warning system" for pending hard disk problems. The system is based on Self-Monitoring Analysis and Reporting Technology (S.M.A.R.T). The hard disk's integrated controller works with various sensors to monitor various aspects of the disk's performance and determines from this information if the disk is behaving normally or not.

This utility gives the current values of various hard disk parameters such as Temperature, Head Flying Height, Spin-Up Time etc and compares these values to a Threshold value below/above which the hard disk is likely to fail. The moment any one of the current values equals or exceeds the threshold value, the utility displays a warning of impending problems.



The fundamental principle behind S.M.A.R.T is that many problems with hard disks don't occur suddenly. They result from a slow degradation of various mechanical or electronic components. The hard disks parameters usually exhibit a gradual, detectable decline in performance and it is when a parameter value approaches its safety limit that the Stellar Smart issues a warning.

Key Features:

- Runs constantly in the background, thereby providing real-time information about the condition of the hard disk(s).
- Provides standard hard disk information such as Serial/Model Number, Number of cylinders, and so on.
- Provides information on various hard disk attributes and also displays their fitness level.
- Able to scan and display bad sectors on hard disk(s).
- Scheduler to configure software parameters such as Temperature Warning, Temperature Update, and Log Scheduling.
- Maintains log reports of disk scans, disk status and so on.
- Can clone hard disks (that is, it can paste the contents of a potentially fatal disk onto a healthy disk).
- Provides graphical comparison of temperature fluctuations in relation to warning/shutdown levels.
- Displays real time 'Benchmark' graph showing the Hard Disk data transfer rate and CPU usage.
- Can test any IDE/SATA disk.
- Simple and easy to use, with no loss in system performance.

Systems Requirement:

- Operating System: Win 95/98/ME/NT/2000/XP/2003
- Memory: 32MB (Minimum); 64 MB (recommended)
- Hard Disk: At least 10MB of free space

Software License Options:

- Single User License

Software Interface Languages: English

Product URL: <http://www.stellarinfo.com/hard-drive-monitor.htm>

Support Information - Hard Drive Data Recovery Software & Services

Software Sales
Technical Support
Partnership Request

[Submit a ticket online](#)
[Submit a ticket online](#)
[Submit a ticket online](#)

USA (Tollfree) Helpline
UK (Europe)
India (Helpline)

+ 1-866-978-0600
+ 44-207-993-2293
+ 91-9213955509

Website Url: www.stellarinfo.com