

Stellar Phoenix®
WINDOWS 7
DATA RECOVERY

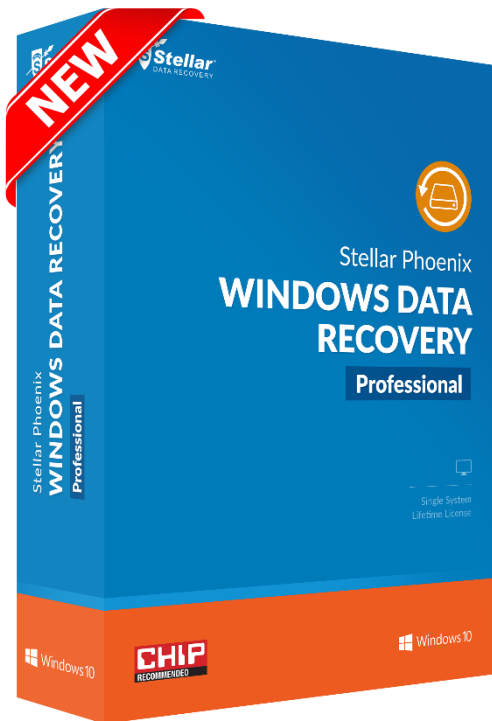
Stellar Phoenix Windows Data Recovery helps you recover **lost files**, folders, documents, photos, music & other important files, **after all instances of data loss** including accidental deletion and formatting.

Key Features

- ☑ It's easy **Do - It - Yourself** data recovery software
- ☑ **Recover in 2 simple steps of** selecting file type & then selecting recovery location
- ☑ **Safe, efficient & hassle free** data recovery
- ☑ Recover **files, folders, documents, emails, photos & videos** even after formatting or deletion
- ☑ Recover from internal & external storage devices like **hard disks, CD/DVD, SD cards, USB drives**
- ☑ Recover specific file types of your choice with provision to **add new file types**
- ☑ **Create image of entire partition for data recovery**
- ☑ **Recover lost partitions**
- ☑ **Supports Windows 10, 8.1, 8, 7, Vista & XP**

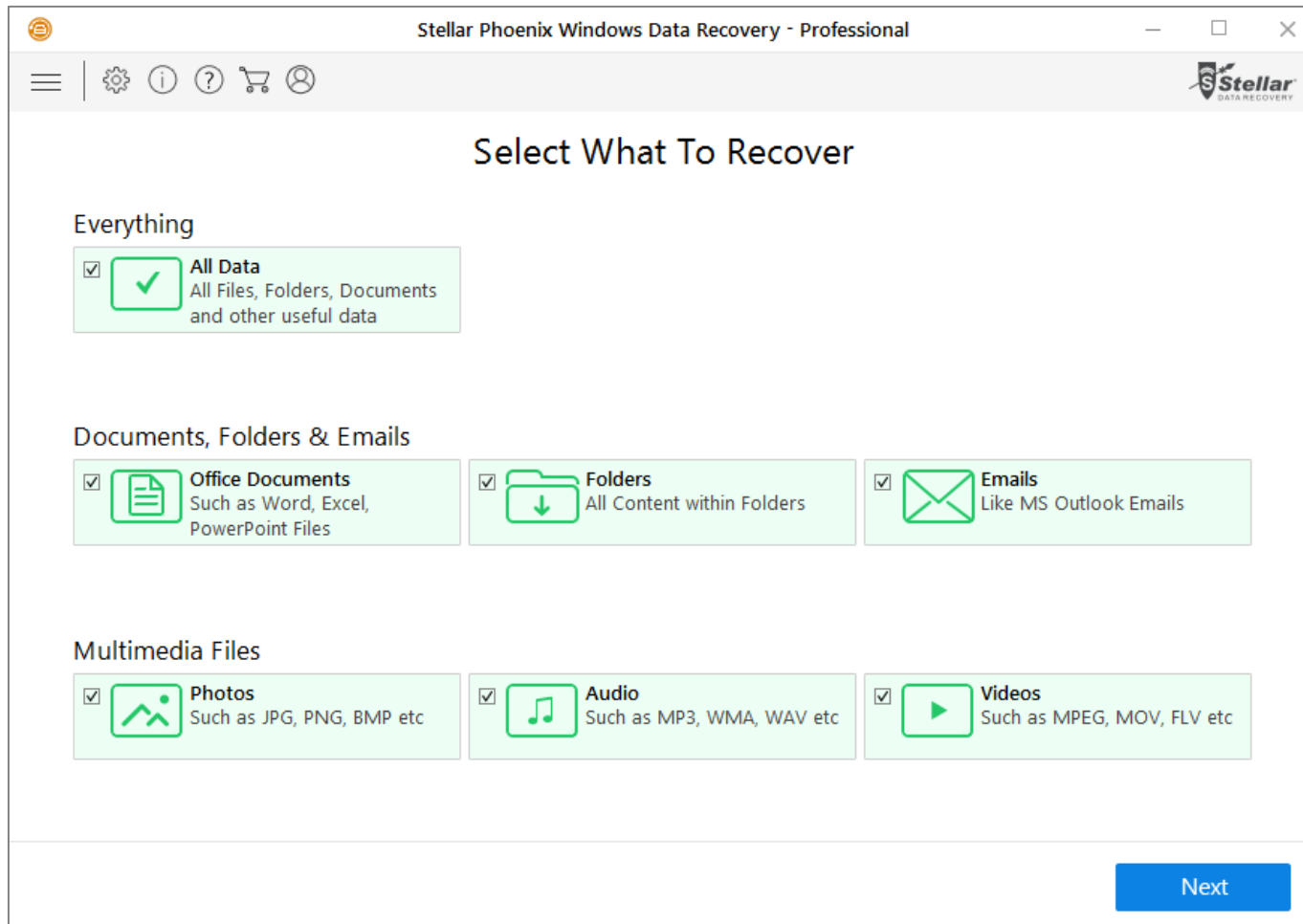


New in Version 7



- ✓ **Brand new user interface** – efficient data recovery has never been easier.
- ✓ **Introducing FREE Version** – recover 1GB data absolutely free.
- ✓ Search for lost data in **specific folders** and minimize time to recover data.
- ✓ Dedicated **option to recover either folders, documents, multimedia files** and speed up scan time.
- ✓ Improved scanning engine for up to **25% better data recovery results**.
- ✓ Improved scanning engine to locate **lost partitions with up to 40% better results**.
- ✓ **Raw file recovery** is now automatic for richer recovery results.
- ✓ **Enhanced support for adding new files types** for data recovery.
- ✓ Windows 10 support

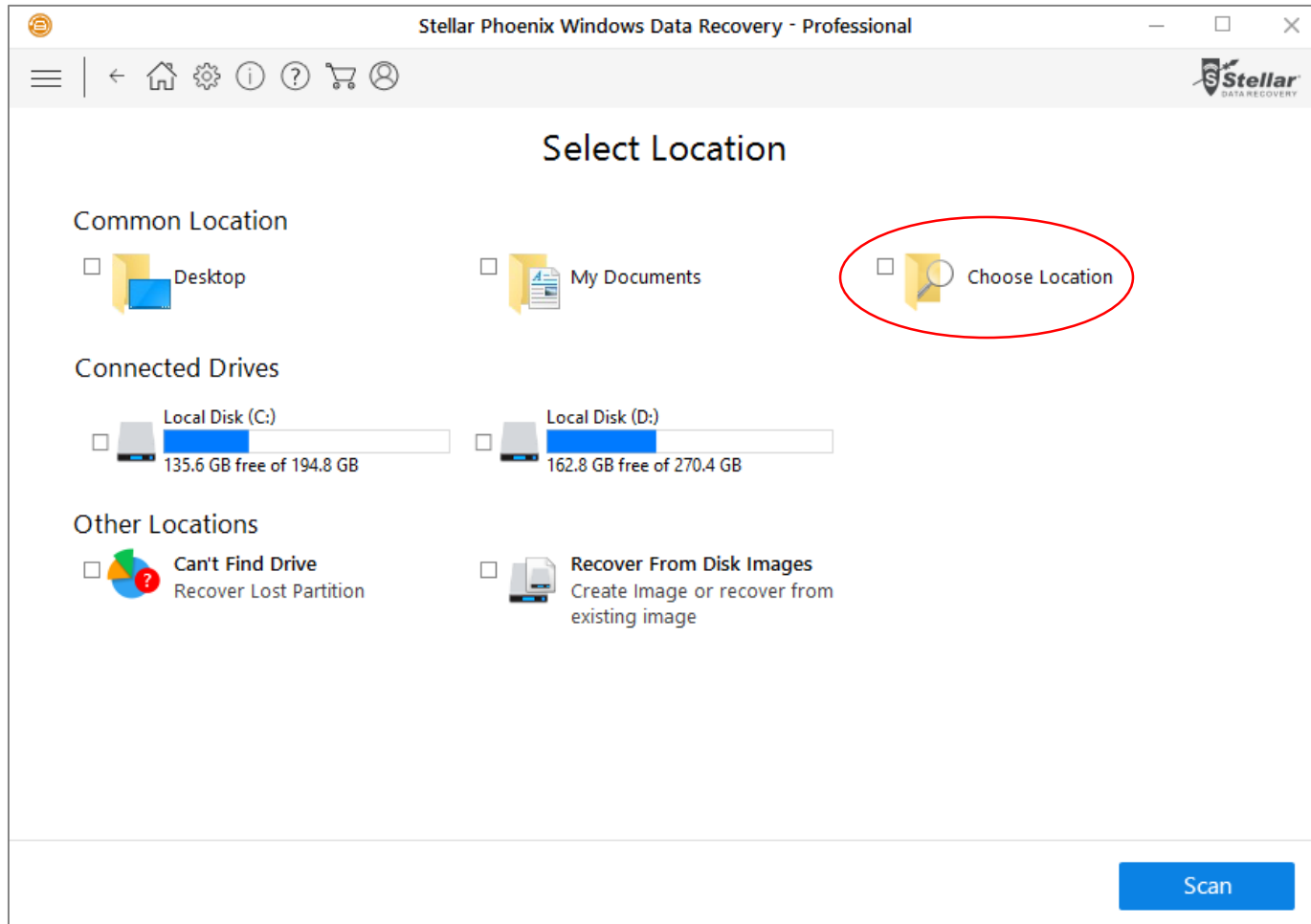
Product Functionalities



Select What To Recover

With the new version of Stellar Phoenix Windows Data Recovery software you can recover specific type of data. This optimizes the performance of the software and saves your time. you can select **“Everything”** to **recover all data**. You also have an **option to select documents, folders or multimedia files**.

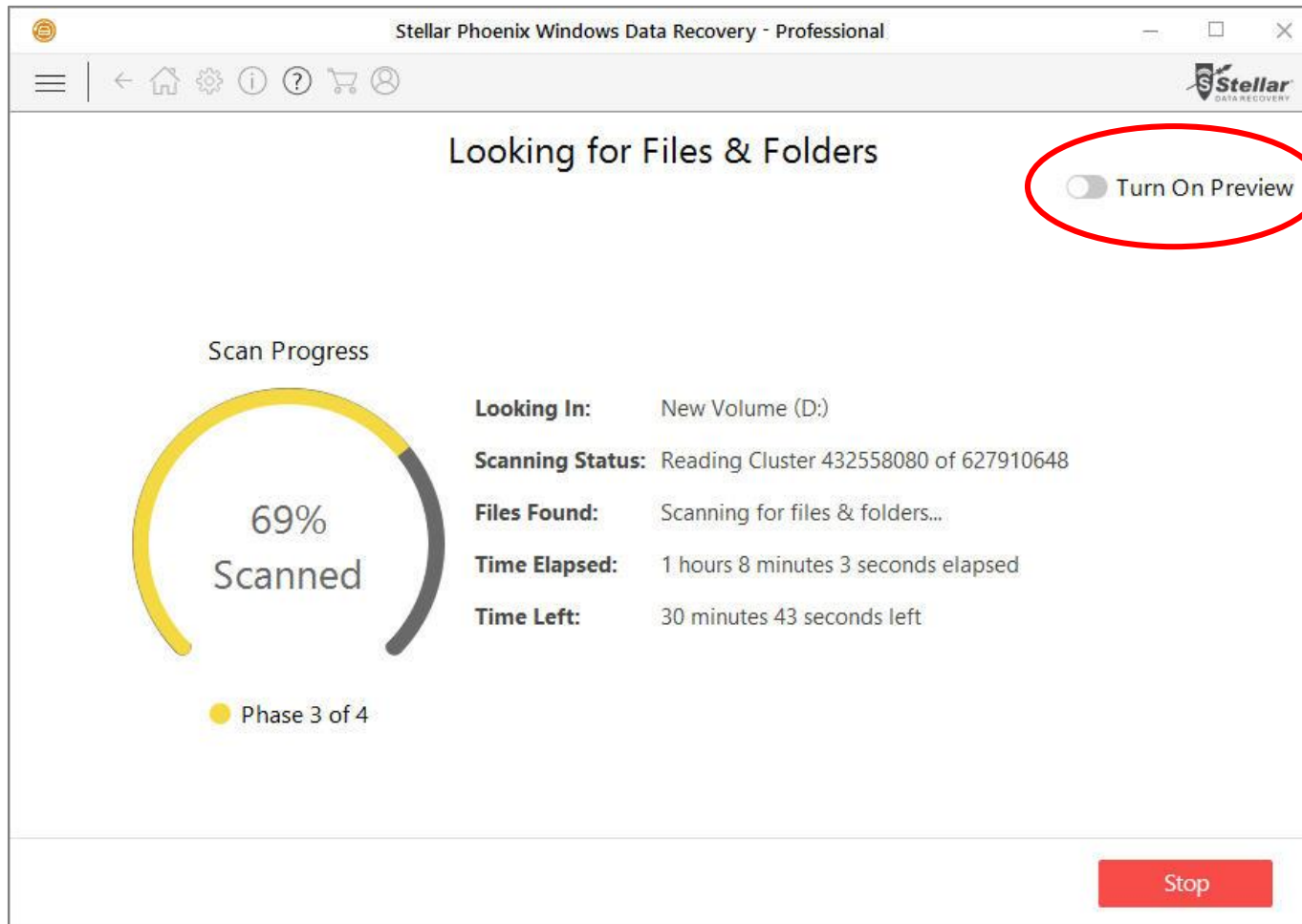
Product Functionalities



Select Location to Search for Data

Stellar Phoenix Windows Data Recovery gives you an option to look at specific locations of your storage device to search for lost data. You can browse to your desired location through **“Choose Location”** option and look in specific folders to optimize recovery time. You can even select partitions for data recovery.

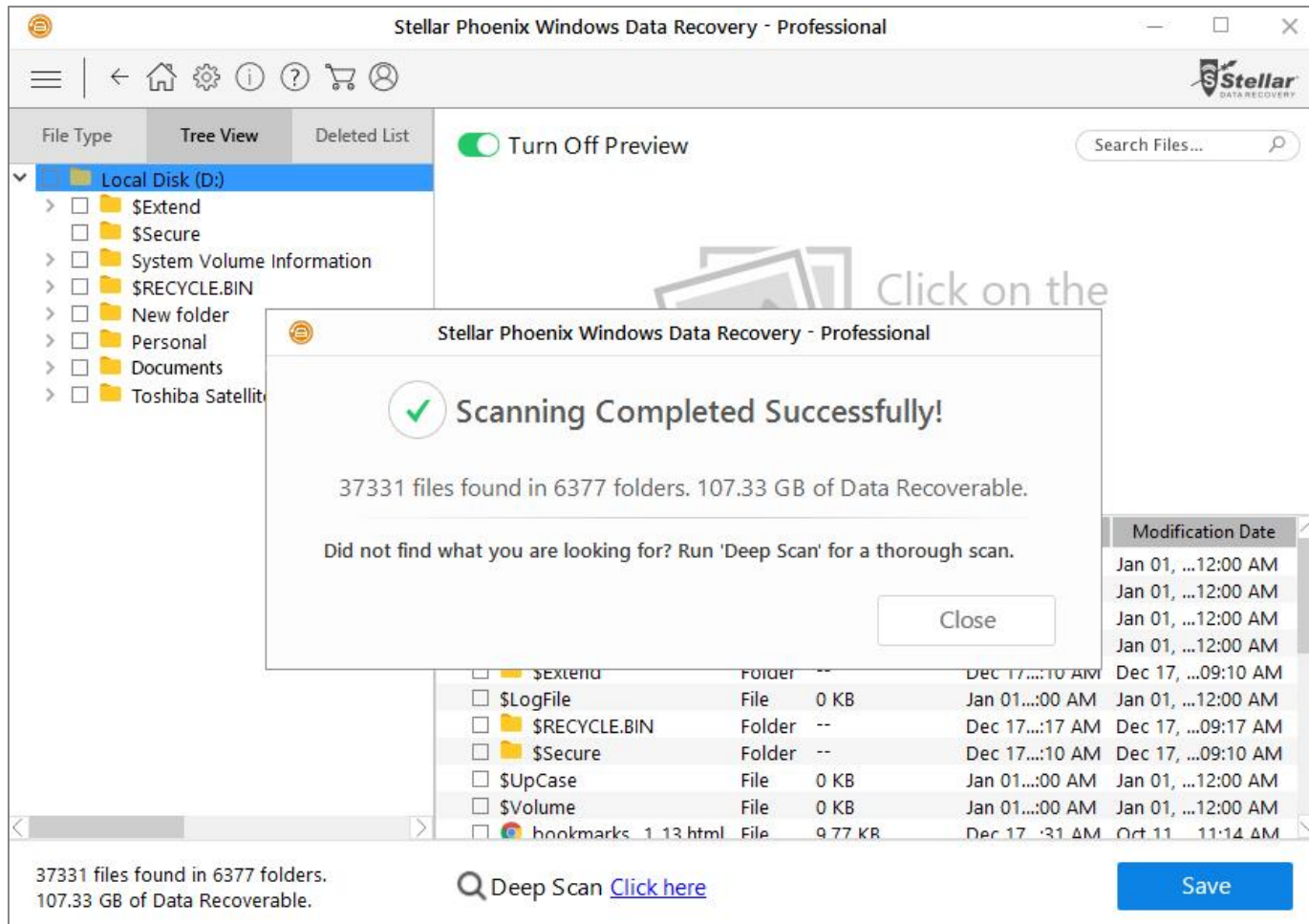
Product Functionalities



Preview During Scan

The software will scan the selected location and recover desired data. Here you have an option to **turn on preview**. This will generate a preview of files the software has found during the scan. **By default the preview is off** to optimize the speed of data recovery.

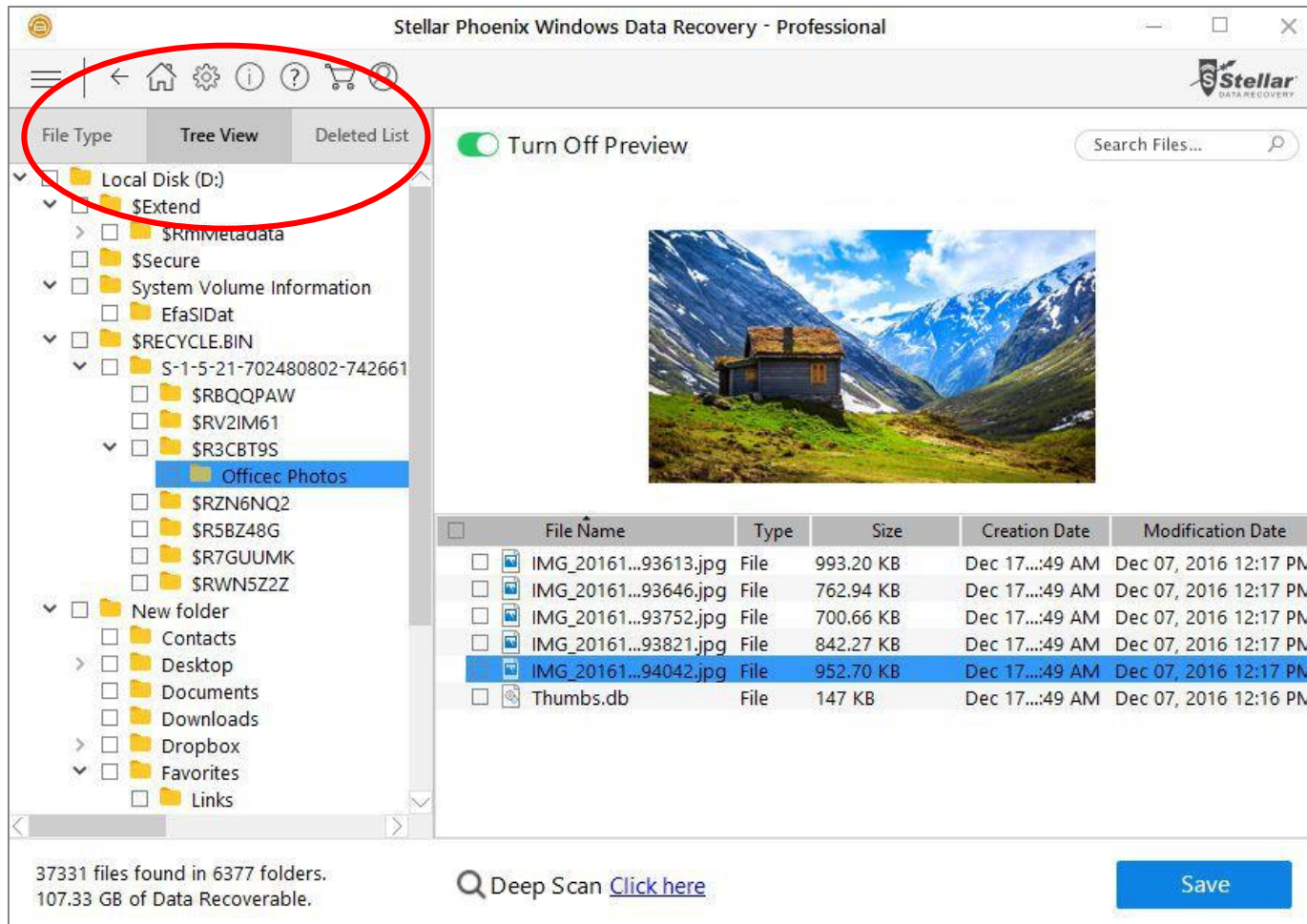
Product Functionalities



Scan Successful

Once the scanning process is over, the **volume of data that the software has been able to recover will be displayed in a dialogue.** You can close it and preview all recoverable data and save desired files.

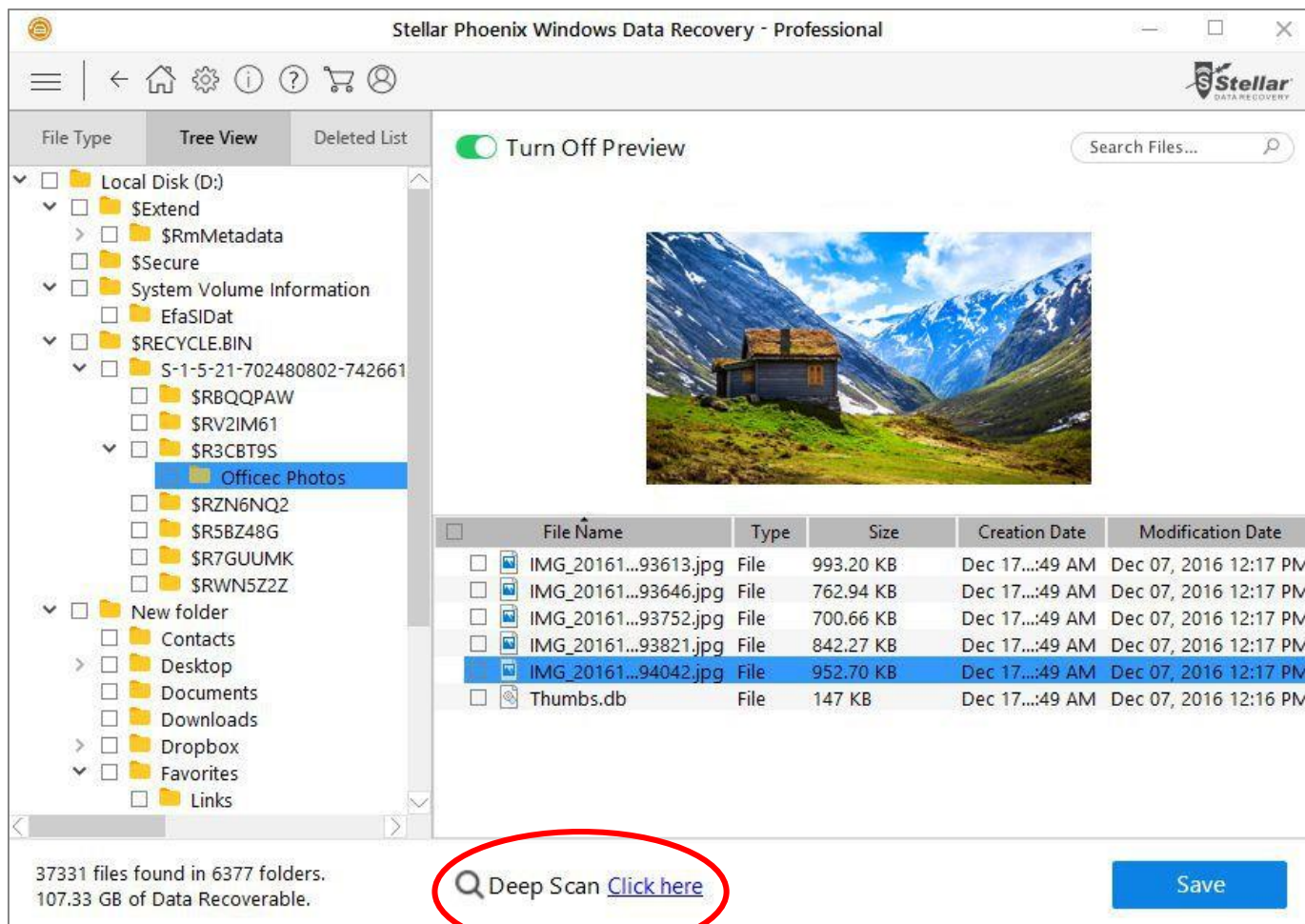
Product Functionalities



Scan Results

Once the selected location has been scanned completely, all data that is found is shown in a three pane structure. You can select between different views. **“File Type”** will sort the result as per the type of files found, **“Tree View”** will sort results as per their location. **“Deleted List”** will show only deleted data that has been recovered. In case the desired data is not recovered, you can run a **“Deep Scan”** which will deliver better results after performing an in-depth scan of the selected location.

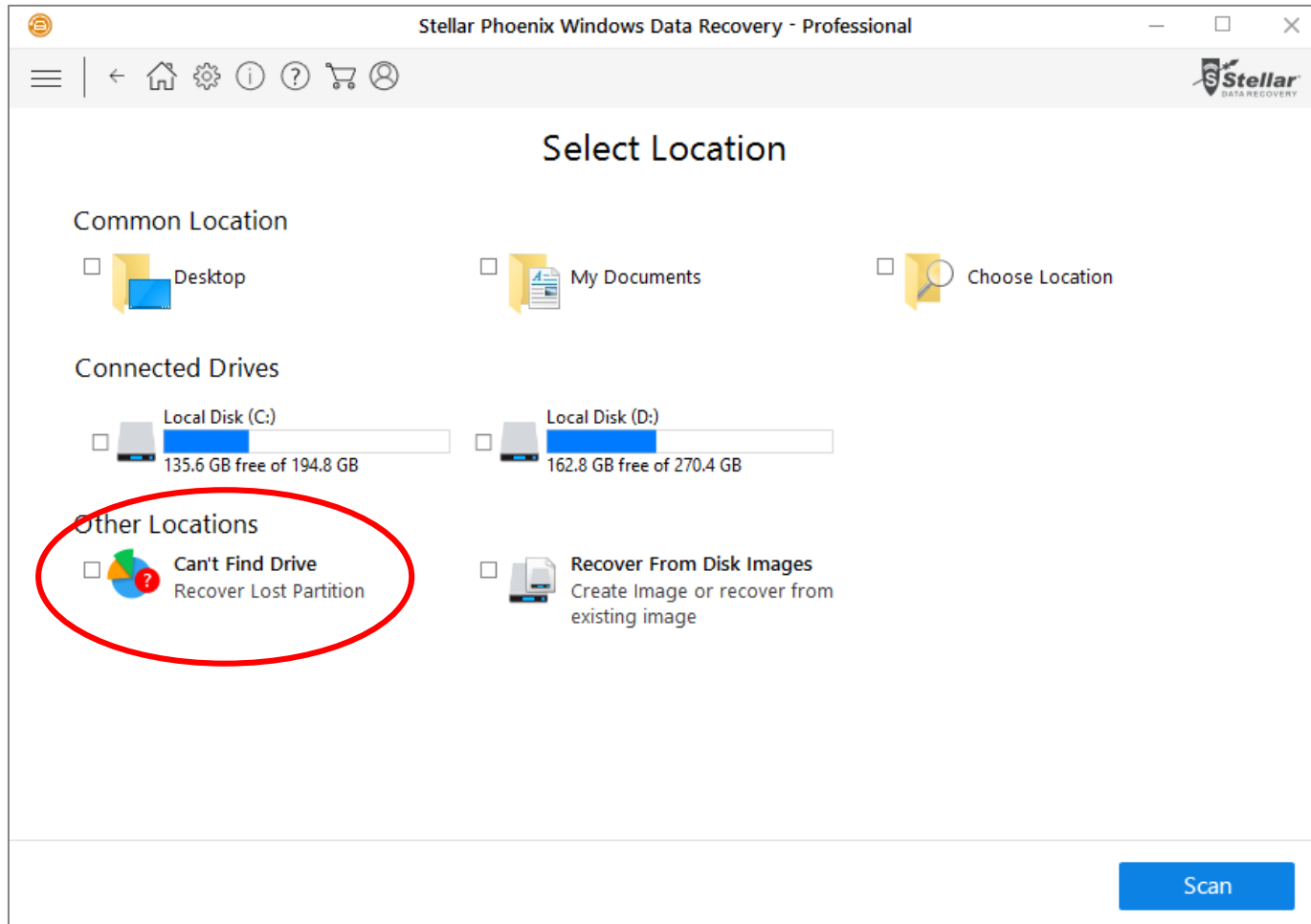
Product Functionalities



Deep Scan

In case you can't find desired data in the primary scan results, you can select **"Deep Scan"** and run a more thorough scan of the selected location. This scan takes longer and should be run in case the primary scan is unable to deliver desired results. Deep Scan will look for all files and **recover even raw data**. This is the most comprehensive scan available today which delivers high quality results.

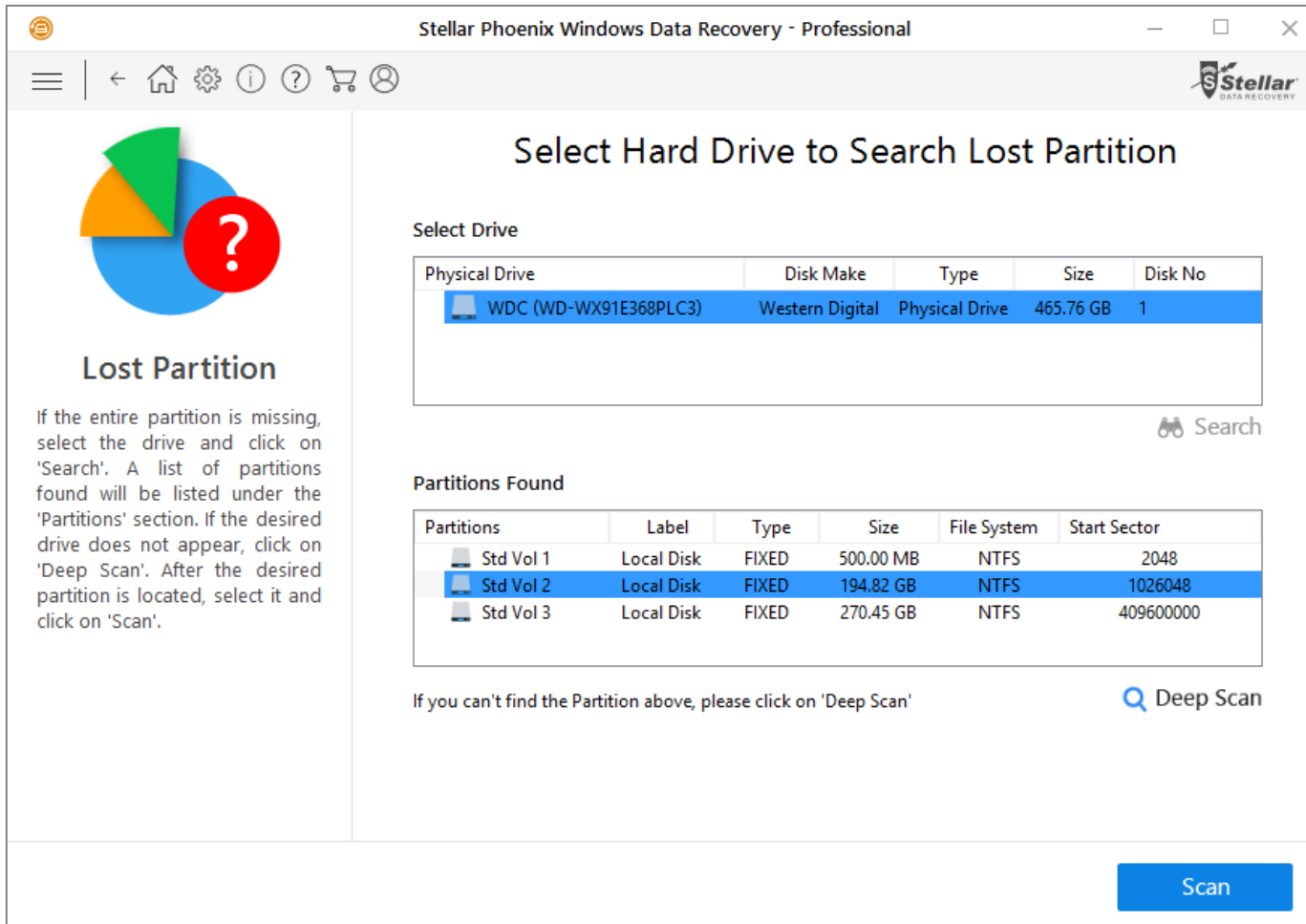
Product Functionalities



Lost Partition Recovery

If your entire partition is missing, the software allows you to look for it through its **“Can't Find Drive”** option available under **“Other Locations”** in the location selection screen. It scans the hard drive for missing partitions which have been lost due to corruption or have been accidentally deleted. Once the partition has been found, all data can be recovered from it easily.

Product Functionalities



Lost Partition

If the entire partition is missing, select the drive and click on 'Search'. A list of partitions found will be listed under the 'Partitions' section. If the desired drive does not appear, click on 'Deep Scan'. After the desired partition is located, select it and click on 'Scan'.

Select Hard Drive to Search Lost Partition

Select Drive

Physical Drive	Disk Make	Type	Size	Disk No
WDC (WD-WX91E368PLC3)	Western Digital	Physical Drive	465.76 GB	1

Search

Partitions Found

Partitions	Label	Type	Size	File System	Start Sector
Std Vol 1	Local Disk	FIXED	500.00 MB	NTFS	2048
Std Vol 2	Local Disk	FIXED	194.82 GB	NTFS	1026048
Std Vol 3	Local Disk	FIXED	270.45 GB	NTFS	409600000

If you can't find the Partition above, please click on 'Deep Scan'

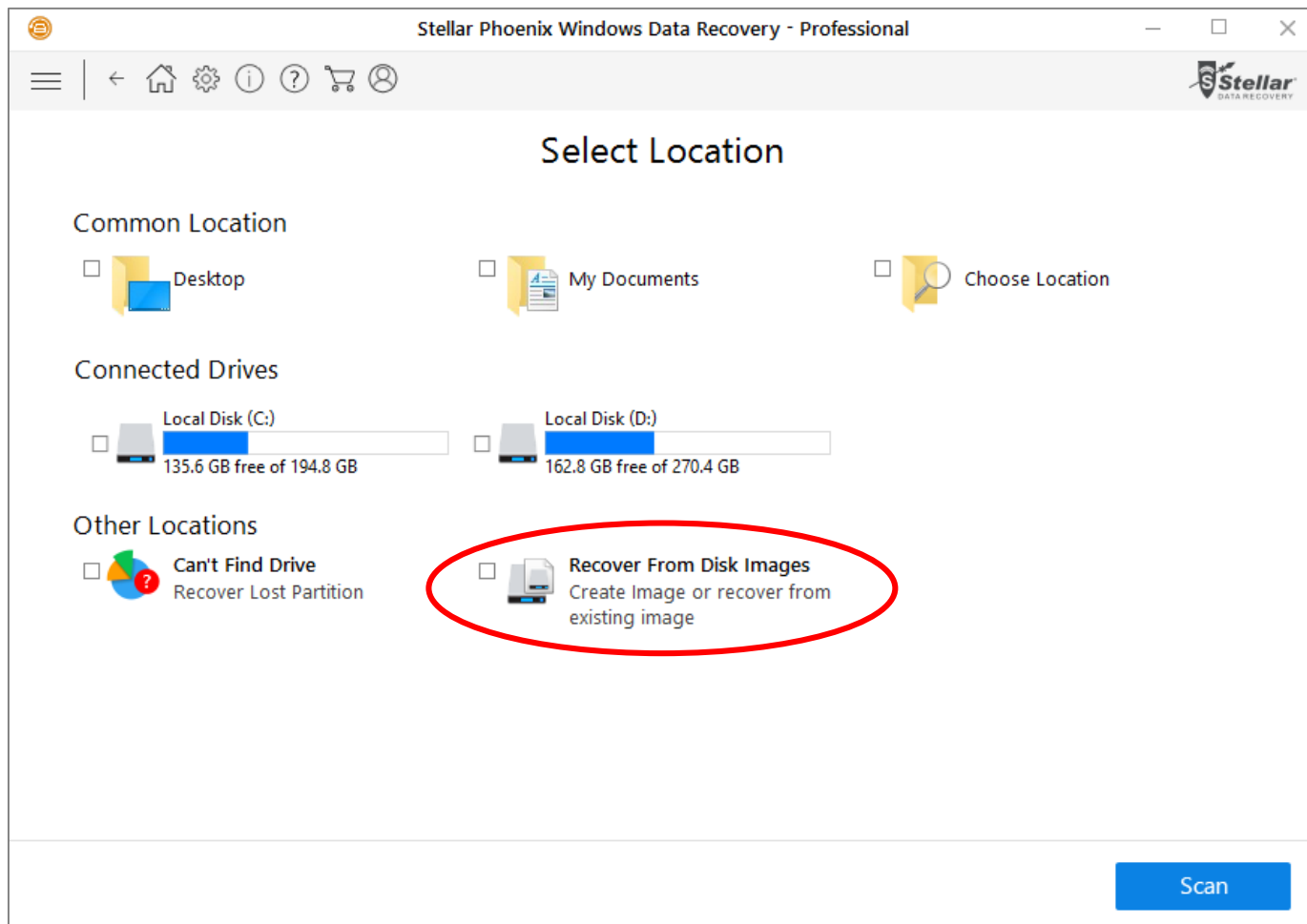
Deep Scan

Scan

Lost Partition Recovery

After selecting the “Cant Find Drive” option, simply select the hard drive in which the partition was created and click **“Search”**. All partitions found will be listed under the partitions section. If the desired partition is not listed, click on **“Deep Scan”** to locate it. Select the desired partition to begin scanning for data recovery.

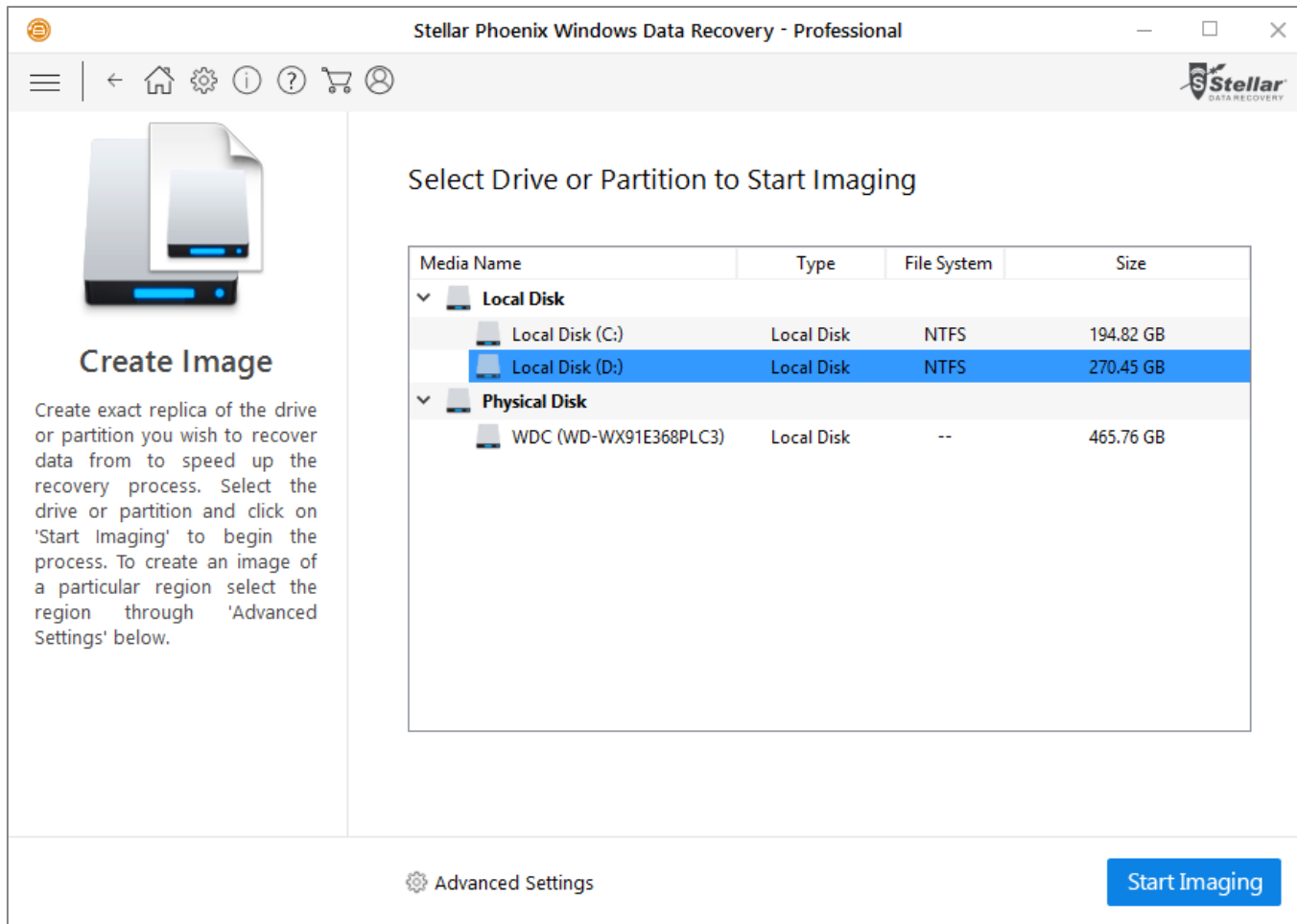
Product Functionalities



Recover From Disk Images

If your drive has many bad sectors you have an option to create an image of that drive and recover data. Click on "Recover From Disk Images" to **create a new image or recover data from existing image.**

Product Functionalities



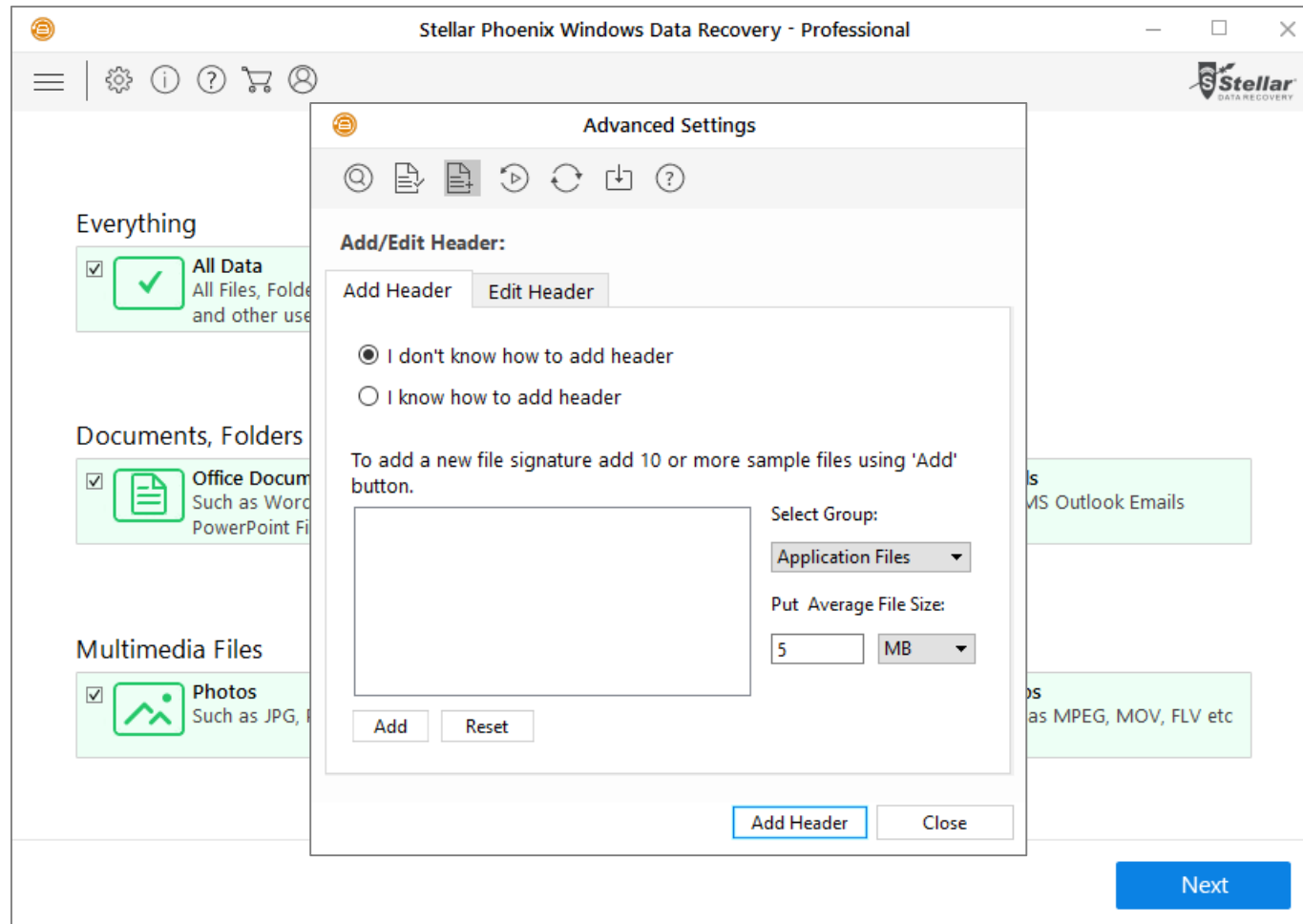
The screenshot shows the Stellar Phoenix Windows Data Recovery - Professional software interface. The window title is "Stellar Phoenix Windows Data Recovery - Professional". The interface is divided into two main sections. On the left, there is a "Create Image" section with a document icon and a text box that reads: "Create exact replica of the drive or partition you wish to recover data from to speed up the recovery process. Select the drive or partition and click on 'Start Imaging' to begin the process. To create an image of a particular region select the region through 'Advanced Settings' below." Below this text is a gear icon labeled "Advanced Settings". On the right, there is a section titled "Select Drive or Partition to Start Imaging" which contains a table of available media. The table has four columns: "Media Name", "Type", "File System", and "Size". The table lists three items: "Local Disk (C:)", "Local Disk (D:)", and "WDC (WD-WX91E368PLC3)". The "Local Disk (D:)" row is highlighted in blue. At the bottom right of the interface is a blue button labeled "Start Imaging".

Media Name	Type	File System	Size
Local Disk (C:)	Local Disk	NTFS	194.82 GB
Local Disk (D:)	Local Disk	NTFS	270.45 GB
WDC (WD-WX91E368PLC3)	Local Disk	--	465.76 GB

Recover From Disk Images

Select the drive or partition to create an image. Here you have an option to select a specific range of the hard drive for imaging under **"Advanced Settings"** and create a new image for data recovery.

Product Functionalities



Add New File Types

You can add new file types to recover them through Stellar Phoenix Windows Data Recovery. You can simply click on the “Settings” button and then locate “Add Header”.

Version Comparison



Feature	V7	V6	Benefit
Data Recovery	✓	✓	Recover files, folders, documents, photos, videos etc. from more than 200 formats. You can also add new formats of your choice for data recovery.
On the Fly Media Detection	✓	✓	Automatically detects the storage media like external hard drives, USB drives when connected.
Enhanced File Tree View	✓	✓	Easily locate files in the recovery results either by file type, extension (.doc, .jpg) or location.
Improved Preview	✓+	✓	View your files during scan process. Option to turn the preview off and speed up the scanning process.
Email Recovery	✓	✓	Helps you recover deleted PST files.
Create Image	✓	✓	Helps you create a replica of your entire drive or partition. This helps in case the drive has bad sectors, an image can be created to run a scan on it.
Recover Data from Large Drives	✓	✗	Recovers lost data from large hard drives >5TB.
Automatic Raw Recovery	✓	✗	Automatically switches to a deep scan mode in case data recovery results of the primary scan do not deliver satisfactory results. This recovers data in case of severe corruption.

Version Comparison



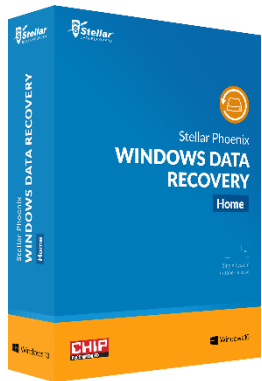
Feature	V7	V6	Benefit
Improved Scanning Engine to Locate Lost Partitions	✓	✗	Entire partitions that are lost can be found efficiently with up to 40% better results than previous version.
Improved Scan Engine for FAT, NTFS, exFAT partitions	✓	✗	Finds lost data more accurately with no duplicity.
Improved Deleted File Recovery	✓	✗	More powerful to recover accidentally deleted files even after emptying recycle bin.
User Friendly Interface	✓	✗	Efficient data recovery has never been easier. Brand new user interface that makes data recovery a cake walk.
Deep Scan	✓	✗	Scan deeper in case data recovery results of the primary scan are not satisfactory.
Add New File Types for Data Recovery	✓	✗	Improved support for recovering data of new file types.
Dedicated Option for Office Documents Recovery	✓	✗	New option to select only documents for data recovery.
Dedicated Option for Folder Recovery	✓	✗	New Option to select only folders for data recovery.
Option for Selecting a Location for Data Recovery	✓	✗	Select a location in your drive to look for lost data instead of searching the whole drive.

License Comparison



Feature	Home	Professional
Brand New Interface for Simple 2 Step Recovery	✓	✓
Data Recovery of All Files, Documents & Folders	✓	✓
Data Recovery From All Storage Devices Including Large Drives	✓	✓
On the Fly Media Detection	✓	✓
Preview Recoverable Files	✓	✓
Email Recovery	✓	✓
Improved Scanning Engine	✓	✓
Search Lost Partitions	✓	✓
Window 10 Support	✓	✓
Raw Data Scanning & Recovery	✗	✓
Create Drive or Partition Image	✗	✓
Advanced Settings to Save Recovered Data	✗	✓
CD/DVD Recovery	✗	✓
System Startup Disc	✗	✓

Product Availability



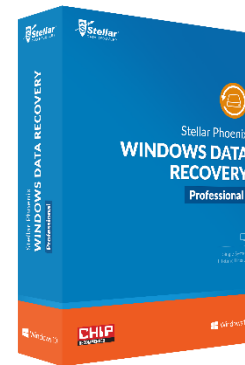
Product: Stellar Phoenix Windows Data Recovery Home

Version: 7

Pricing: \$59.99

Download Link: <https://goo.gl/8mJ31>

Languages: English, French, German, Spanish, Italian



Product: Stellar Phoenix Windows Data Recovery Pro

Version: 7

Pricing: \$99

Download Link: <https://goo.gl/0X55VZ>

Languages: English, French, German, Spanish, Italian

Product Awards



“Stellar Phoenix can help you recover potentially lost files with the least amount of frustration possible”



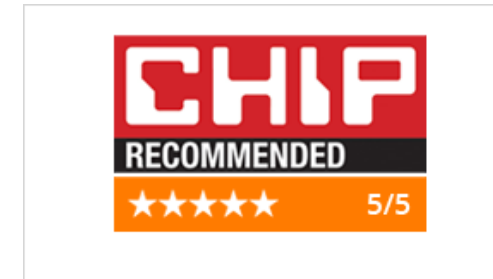
“Powerful data-recovery software with the best built-in file previewer of any product in this category.”



“All in all, the Stellar Windows Data Recovery 6 offers a proven data recovery solution at a competitive price.”



“Computer data they are personal Professional, or are extremely important nowadays. Their loss may have serious consequences but, Fortunately, there are some solutions to retrieve the data. Discover Windows Data Recovery.”



“A versatile and robust data recovery utility.”

Customer Testimonials



"I accidentally deleted all of our honeymoon videos from Costa Rico. They were on the internal memory of a Cannon Vixia camera. As soon as it happened, my heart sank. I figured that these precious memories were lost forever. I downloaded the Stellar Data Recovery software, and it actually recovered all the videos directly off of the camera. It worked perfectly! Thank you very much! I highly recommend this software."

- Jason Hiltabide



I swore, I slammed the counter, I cursed myself for "letting" the camera continue processing when I knew it was deleting 8G of photos - "Grandpa's 79th b-day, my daughter and niece "sleeping" over reading with the flashlight under the covers! Precious moments - my girl's first taffy apple! A heartfelt thanks to your team and for your software in recovering my memories! It would be priceless - but you also made it affordable!

- Helen Brooks.



You saved my life. I accidentally formatted an internal hard drive that contained thousands of photo images including our honeymoon! My first attempt was a free software called but it did not recover most of my raw data. Then I purchased Stellar Phoenix Windows Data Recovery and it works beautifully. Thank you very much!

-Ken Wakita

About Stellar



Stellar Data Recovery has established itself as a global leader in providing data recovery, data migration and data erasure solutions over the past two decades. We offer simple 'Do-It-Yourself' software and provide professional in-lab data recovery & data sanitization services. Our in-house team of 80+ R&D experts develop indigenous solutions for data recovery, data migration and data erasure. Today Stellar Data Recovery is the most trusted brand amongst businesses and consumers worldwide.

Stellar Advantage:



World Leader
Data Recovery,
Data Migration
& Data Erasure
Solutions



State of Art
Technology
Labs (Class
100 Clean
Room

Microsoft Partner
Gold Independent Software Vendor (ISV)

Microsoft
Gold ISV



ISO
9001:2008
Certified



More Than
8000 Global
Partners



Presence Across
USA, Europe &
Asia



2 Million +
Customers

2 Million +
Customers
Globally