



Stellar Drive Clone

Version 3.5

User Guide

Overview

Stellar Drive Clone for Mac, creates clone and image of hard drive or volume as well as restores backup and volume image. Clone created can be used as a backup or as a startup disk. Entire content from the source is copied to destination, retaining every details of the original drive which makes the clone drive bootable. The cloning process will erase data from the destination drive beyond recovery. The software creates hard drive or volume image for backup purpose and can recover data from it at any moment. In addition, you can restore volume from a folder or a mountable volume image file to its previous state. Another important feature of **Stellar Drive Clone** is the ability to create bootable DMG and minimal system, which comes handy when Mac OS crashes or fails to boot.

What's new in this version?

- Support for encrypted volume.

Key Features:

- New look GUI.
- Creates a complete replica of drive or volume.
- Can resize the volume of the destination drive to make full use of it.
- Supports cloning of drive volume to another volume, folder or connected network drive.
- Creates image of the hard drive or volume for backup purpose.
- Restores volume from a folder or a mountable volume image.
- Creates bootable DMG and Minimal System for Mac OS X.
- Preferences can be set to personalize end task activities and software up dation.
- Support for Partition Map scheme MBR (Master Boot Record).
- Support for ExFAT file system.
- Clones Solid State Drive(SSD) to Mac Drive.
- Clones NTFS formatted drive into ExFAT formatted drive in Lion OS.
- Take backup of your data.
- Schedule automatic backup of data periodically.

Why Stellar Drive Clone?

Creates Clone of Hard Drive/Volume

Clone of hard drive/volume involves creating a copy of entire drive or volume content. A Clone, created using Stellar Drive Clone, can be used as backup or a boot drive. A clone is useful if there is a need to upgrade hard drive, reboot or restore system or when a full system backup is needed. Stellar Drive Clone can be used to create clone of drive/volume to a drive, volume, folder or a network drive.

Capable of Resizing Volumes on Target Drive

Stellar Drive Clone creates clone of a drive to another hard drive having size equal or greater than the source drive. If the target drive is of higher capacity, **Stellar Drive Clone** can resize volumes in the target drive to make full use. By default, drive cloning takes place without any changes. So, if the target drive has more space then the free space left after cloning will be of no use. For making the drive space useful, you need to choose Resize volume(s) of destination drive in the application and specify the new volume size.

Creates Image of Hard Drive/Volume

Image file contains complete content of the source hard drive or volume. Using image files you can restore the entire disk or a volume in the event of system crash. Stellar Drive Clone supports creating image of both hard drive and volumes.

Restores Volume from Folder/Image File

Restore feature is used to copy back the data from the cloned folder or an image file to the volume to put it into its original state. Restoration process by Stellar Drive Clone is much faster than the manual process.

Creates Bootable DMG

Bootable feature of Stellar Drive Clone allows users to create personal bootable DMG for Mac OS X. The bootable Mac DMG can include one or more installed applications into it. Stellar Drive Clone is installed automatically into the bootable DMG. The compatibility of the DMG depends on the machine it is created. This means that if the DMG is created on PowerPC, you can use it to boot PowerPC machine only.

Creates Minimal System Drive

Stellar Drive Clone can be used to create a minimal system that can be used to boot the system in case of emergency. This feature will copy all the system files from an installed Mac OS X to another volume. The result of the copy is a minimal system with Apple's default applications and an empty user's folder containing default folders, preferences etc.

Installation Procedure

Before installing the software, check that your system meets the minimum system requirements:

Minimum System Requirements

- **Processor:** Intel
- **Operating System:** Mac OS 10.5.0 and above
- **Memory:** 1 GB RAM
- **Hard Disk:** 50 MB of free space

Steps to install Stellar Drive Clone

- Unpack **StellarDriveClone.dmg.zip** file.
- Decompress the zip file and double click the **dmg** file. This step will mount a virtual volume - **StellarDriveClone**.
- Double-click **StellarDriveClone** volume to open **Stellar Drive Clone** application window.
- Drag **Stellar Drive Clone** file to the **Applications** folder.
- To launch the software, double click on **Stellar Drive Clone** file in **Applications** folder.
- This displays **License Agreement**. If user accepts the **License Agreement**, then the software is launched; otherwise, it terminates.

To remove the software, drag and drop the **StellarDriveClone** file from **Applications** folder to **Trash**.

Order and Register

Order Stellar Drive Clone

The software can be purchased online. For price details and to place an order, click [here](#).

Once the order is confirmed, a pre-paid registration key will be sent through e-mail, which would be required to register the software.

Register Stellar Drive Clone

To Register Stellar Drive Clone application

1. On the **Tools** menu, click **Register**. **Registration** window is displayed.
2. Do one of the following:
 - If you have purchased the product and received registration key,
 - a. Select '*I have a key to register the product*' option. Click **OK**.
 - b. In **Registration Key** dialog box, type the key. Click **OK**.
 - If you have to purchase the product,
 - a. Select '*I don't have a key to register the product*'. Click **OK**, to purchase the product.

How to Update?

To update **Stellar Drive Clone**, do one of the following:

To schedule Stellar Drive Clone to check for updates automatically

1. Run **Stellar Drive Clone**, click on **Preferences** button on the main screen or select **StellarDriveClone > Preferences**.
2. To schedule **Stellar Drive Clone** to automatically download updates, select **Check for updates** checkbox and then assign frequency for checking of updates (either **Daily**, **Weekly** or **Monthly**).
3. Click **OK**.

To check for updates manually

1. Run **Stellar Drive Clone** application.
2. In **StellarDriveClone** menu, click **Preferences...** option.
3. Click **Check for updates now** button.
4. If updates are available, **Update** screen is displayed. Follow the steps and if, No updates are available, a message that '*There are no updates available*' is displayed.

Or,

Updates are available, application will download and install them and then display a '*Updates successfully installed*' message.

5. Click **OK**.

Stellar Support

Our Technical Support professionals will give solutions for all your queries related to Stellar Products.

You can either **Call Us** or **Go Online** to our support section at <http://stellarinfo.com/support/>.

For **price details** and to **place the order**, click <http://www.stellarinfo.com/mac-software/clone-mac/buy-now.php>

Chat Live with an **Online technician** at <http://stellarinfo.com/support/>.

Search in our extensive **Knowledge Base** at <http://www.stellarinfo.com/support/kb/>.

Submit enquiry at <http://www.stellarinfo.com/support/enquiry.php>.

E-mail to Stellar Support at support@stellarinfo.com.

Support Helpline

Monday to Friday [24 Hrs. a day]

USA (Toll free Pre Sales Queries)	+1-877-778-6087
USA (Post Sales Queries)	+1-732-584-2700
UK (Europe)	+44-203-026-5337
Australia & Asia Pacific	+61-280-149-899
Netherlands Pre & Post Sales Support	+31-208-111-188
Worldwide	+91-124-432-6777
Email Orders	orders@stellarinfo.com

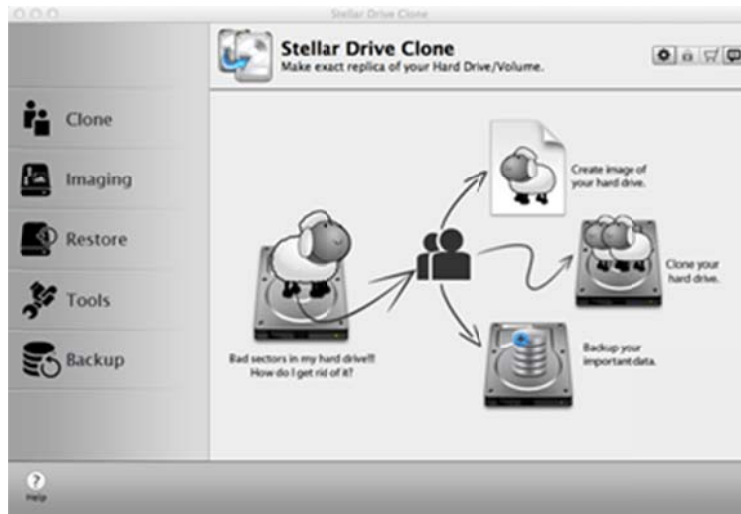
Starting Stellar Drive Clone

Follow any of the following methods to run **Stellar Drive Clone** on a Mac system.

- Double click on **Stellar Drive Clone** file in **Applications** folder.
- Double-click on **Stellar Drive Clone** desktop shortcut (if it is created).
- Click on **Stellar Drive Clone** icon in the dock.

Main User Interface

Stellar Drive Clone has a simple and easy to use graphical user interface. Once you launch **Stellar Drive Clone**, main screen will appear listing the features of the application. Main screen contains the following modules - Clone, Imaging, Restore, Tools and Backup menus and other user options.



Stellar Drive Clone Main Screen

Menus

StellarDriveClone

About StellarDriveClone

Use this option to read information about **Stellar Drive Clone**.

License Agreement

Use this option to view the license agreement.

Preferences...

Use this option to set preferences for cloning and personalizing the process.

Tools

Register...

This option is enabled when you are using unregistered version of **Stellar Drive Clone** application. Use it to register your product.

Help

Help Topics...

Use this option to view **Stellar Drive Clone** help manual.

Order Stellar Drive Clone

Use this option to [buy Stellar Drive Clone](#).

Email to Stellar Support

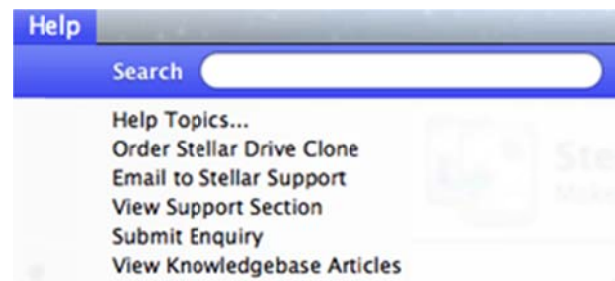
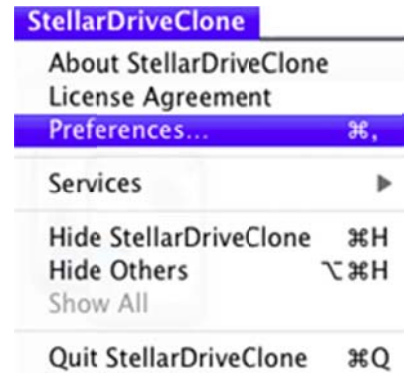
Use this option to [mail for support](#) against any problem.

View Support Section

Use this option to visit support page of [stellarinfo.com](#).

Submit Enquiry

Use this option to [submit enquiry](#) to [stellarinfo.com](#).



View Knowledgebase Articles

Use this option to visit [knowledgebase articles](#) at stellarinfo.com.

Tabs and Buttons

Tabs

Clone Tab

This tab is located on the main screen of **Stellar Drive Clone**. Click this if you want to clone a hard drive/volume.

Imaging Tab

This tab is located on the main screen of **Stellar Drive Clone**. Click this if you want to create an image of a hard drive/volume.

Restore Tab

This tab is located on the main screen of **Stellar Drive Clone**. Click this if you want to restore a hard drive/volume from a clone or image.

Tools

This tab is located on the main screen of **Stellar Drive Clone**. Click this if you want to create a bootable DMG or a minimal system.

Backup Tab

This tab is located on the main screen of **Stellar Drive Clone**. Click this if you want to backup the data of a hard drive/volume.

Buttons

Refresh

Drive



This button is located on the main screen of **Stellar Drive Clone**. Click this to refresh the Drives/Volumes.

Help



This button is located on the main screen of **Stellar Drive Clone**. Click this to launch the application's help.

Stop



This button is located on the main screen of **Stellar Drive Clone**. It is displayed only when a process is running. Click this to stop the process.

Back



This button is located on the main screen of **Stellar Drive Clone**. Click this to move to previous screen of application.

Continue



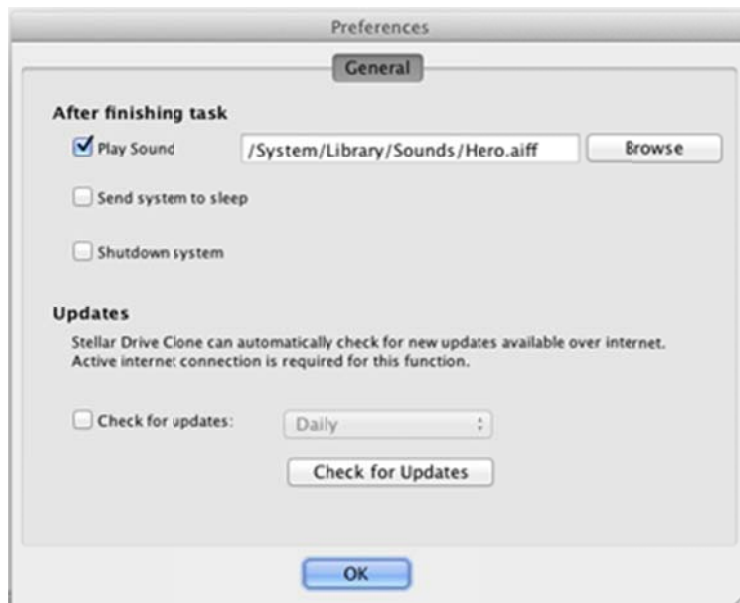
This button is located on the main screen of **Stellar Drive Clone**. Click this to continue to next screen of application.

Set Preferences

General preferences allow setting tasks that will be performed at the end of any process by **Stellar Drive Clone**.

To change finish task preferences

1. Run **Stellar Drive Clone** application.
2. On the **StellarDriveClone** menu, click **Preferences** option.
3. In the **After finishing task** section,
 - o To assign a sound that will be played at the end of process, select **Play Sound** option. Click **Browse** button to select a saved sound file.
 - o To send the system to sleep at the end of process, select **Send system to sleep** option.
 - o To shutdown the system at end of process, select **Shutdown system**
 - o Click **OK** button to save the settings.



To change update task preferences

1. Run **Stellar Drive Clone** application.
2. On the **StellarDriveClone** menu, click **Preferences** option.
3. In the **Updates** section,

- To assign a frequency for checking of updates, select **Check for updates** option.
- Select the frequency in the list.
- Click **OK** button to save the settings. To check for current updates, click **Check for Updates** button.

Clone

Stellar Drive Clone has the following two cloning options available to a user.

Clone

- Disk Clone
- Volume Clone

Disk Clone

Disk Clone consists of two advanced options:

Disk Clone

Clone without resizing

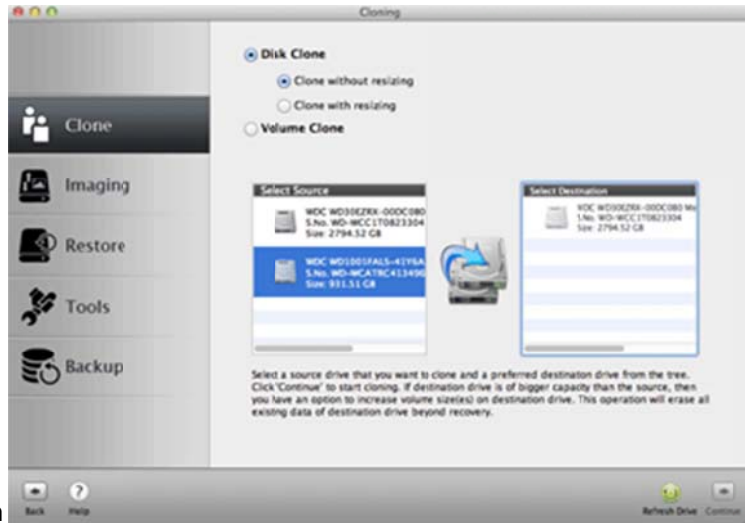
Clone with resizing

Clone without Resizing

If the target drive is of same size as the source drive, or of size greater than the source drive but the extra space is not needed then cloning can be performed without resizing the volumes of destination drive.

To Clone Hard Drive without Resizing

1. Run **Stellar Drive Clone** application.
2. Click **Clone** tab. **Cloning** screen is displayed.
3. Select **Disk Clone** option and then select **Clone without resizing** option.
4. Select the *source drive* and *destination drive* from **Select Source** list and **Select Destination** list, respectively.
5. Click **Continue** to start cloning process.



Note: To clone a drive/volume, the destination must be equal or greater than the source.

By default, the source drive will clone to the destination drive without any changes.

If the destination drive is larger than the source drive, you can resize the destination drive volume to make full use of it.

Clone with Resizing

When the target drive is of size greater than the source drive then the extra space left after cloning will become useless. To make use of the extra space, Clone with resizing feature of **Stellar Drive Clone** can be used to distribute the space among other volumes.

To resize the Volume on the destination drive

1. Run **Stellar Drive Clone** application.
2. Click **Clone** tab. **Cloning** screen is displayed.
3. Select **Disk Clone** option and then select **Clone with resizing** option.
4. Select the *source drive* and *destination drive* from **Select Source** list and **Select Destination** list, respectively.
5. Click **Continue**. Resizing window is displayed.
6. Select the volume you want to resize. Enter new size or drag the slider to specify new size of the Volume(s) in the destination drive. Each time you make a change in the size, click **Accept Size** button to save the changes.
7. Click **Continue** button to start cloning process.



Volume Clone

Clone Drive consists of three advanced options:

Volume Clone

Clone Volume to Volume

Clone Volume to Network Drive

Clone Volume to Folder



Clone Volume to Volume

Clone Volume feature is used to create clone of a volume on another volume in the same drive or another drive. The clone would contain all files and folders of the source volume. This volume can be used either as a bootable volume or as a backup. The cloning process will overwrite existing data beyond recovery.

To Clone to Volume

1. Run **Stellar Drive Clone** application.
2. Click **Clone** tab. **Cloning** screen is displayed.
3. Select **Volume Clone** option and then select **Clone to Volume** option.
4. Select the *source drive* and *destination drive* from **Select Source** list and **Select Destination** list, respectively. You get a warning message, that the operation will overwrite existing data. Make sure that you have selected the right source and destination.
5. Click **Continue** to start cloning process.



This operation will completely erase the destination volume beyond recovery. If you select free space as the destination drive, the application will first create partition using free space and then

perform the clone operation.

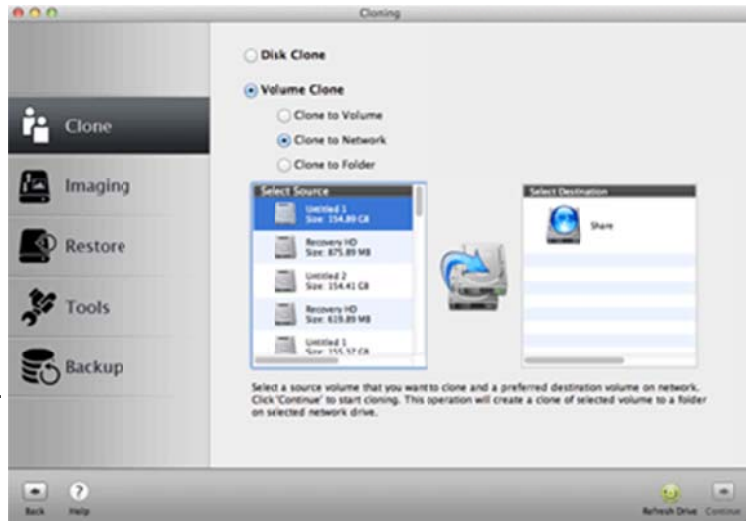
Note: In volume clone, data within the volume is considered other than volume size.

Clone Volume to Network Drive

'Clone to Network' feature is used to create a copy of the source volume on a drive in the network. This will work only as a backup.

To Clone to Network Drive

1. Run **Stellar Drive Clone** application.
2. Click **Clone** tab. **Cloning** screen is displayed.
3. Select **Volume Clone** option and then select **Clone to Network** option.
4. Select the *source drive* from **Select Source** list.



- The **Select Destination** list will show all the network drives connected to the system. Select the required destination in the network. Make sure that all the other network drives are disconnected.
5. Click **Continue** to start cloning process.

Once the process is completed, entire data in the source volume will be cloned to the destination.

- Disconnect all the other network drives, except the selected one.
- Make sure that the files and folders have all permissions (Read, Write and Execute permissions). Otherwise, you will not be able to access those files/folders in the network.

Clone Volume to Folder

'Clone Volume to Folder' feature is used to create a copy of the source volume on a folder/volume located in another drive. The copy works exactly as the source volume. So, by cloning a boot partition, you can use the clone for booting your system in the event of system crash. The resultant folder can thus be used as a backup as well as boot disk.

To Clone to Folder

1. Run **Stellar Drive Clone** application.
2. Click **Clone** tab. **Cloning** screen is displayed.
3. Select **Volume Clone** option and then select **Clone to Folder** option.
4. Select the *source drive* from **Select Source** list.



- To select destination volume/folder, click **Choose Destination** button.
5. You need to navigate to the *destination volume/folder* and click **Choose**.
 6. Click **Continue** to start cloning process.

Once the process is completed, entire data in the source volume will be cloned to the destination.

- In volume clone, data within the volume is considered other than volume size.
- Disconnect all the network drives, before cloning the boot drive or main hard

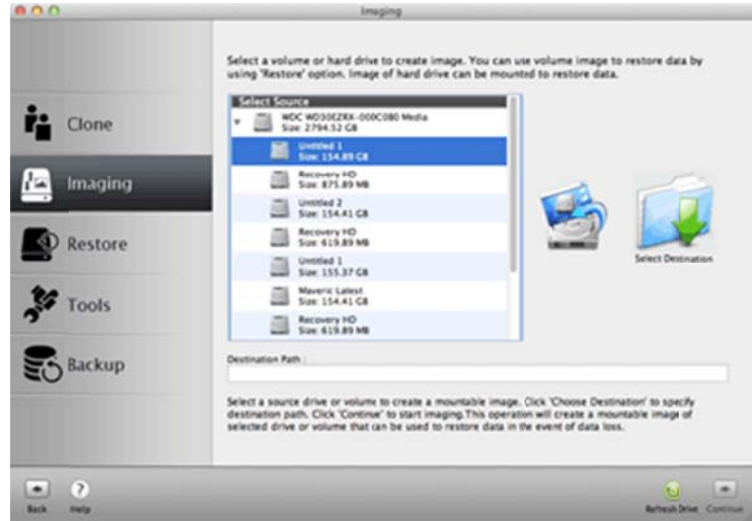
drive.

Imaging

Stellar Drive Clone application has the following two imaging options available to a user.

Imaging

- Create Drive/Volume Image
- Create Image of Boot Volume



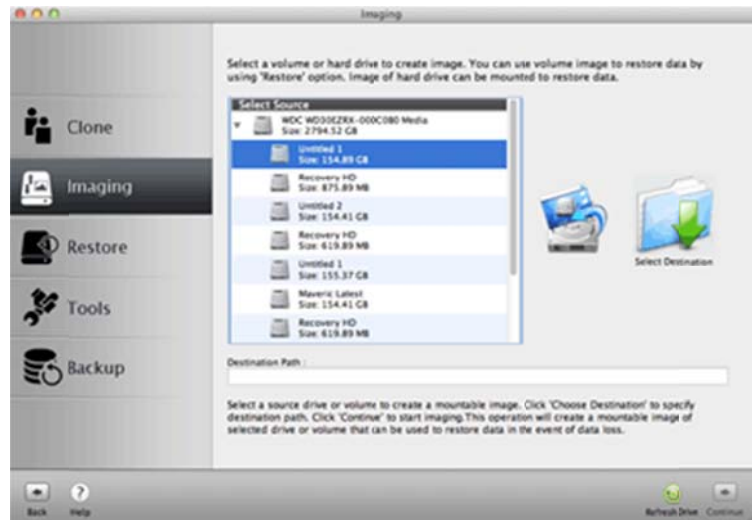
Create Drive/Volume Image

Image file contains complete content of a hard drive or volume. When an image file is created, drive/volume unused space and bad sectors are not included in it. So, it requires less storage space. Image file can be used to restore the entire disk or volume in the event of system crash.

Stellar Drive Clone can be used to create image of both hard drive and volumes.

To Create Drive/volume Image

1. Run **Stellar Drive Clone** application.
2. Click **Imaging** tab.
Imaging screen is displayed.
3. Select the *source drive/volume* from **Select Source** list. If you have selected the boot volume as source drive, a message is displayed from where you can choose to create image of boot volume with minimal system. Click **Choose Destination** button to select destination volume/folder.
4. Navigate to the destination drive/volume, specify the name for the image file and click **Save**.
5. Click **Continue** to start



imaging process.

Note: Destination path must be on another hard drive.

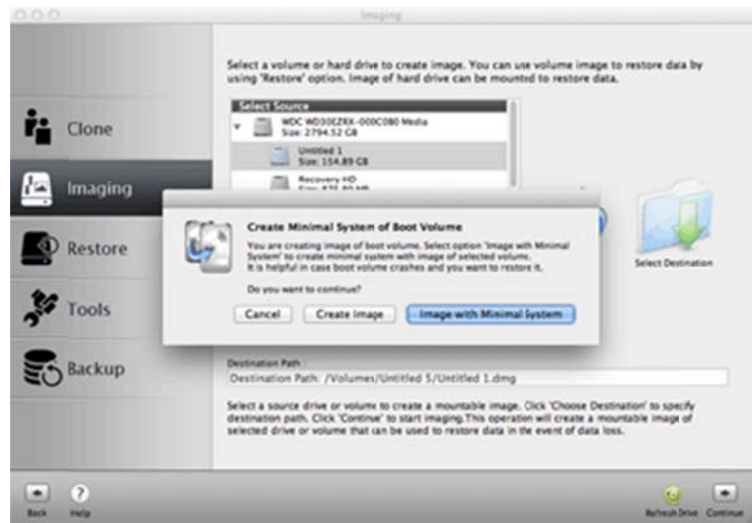
Once the process is completed, image of the drive will be saved to the specified destination.

Create Image of Boot Volume with Minimal System

Stellar Drive Clone allows creating boot volume with a minimal system installed in it. This minimal system runs like an operating system having minimal functions. You can run allowed programs and perform basic functions with its help.

To create image of the boot volume with minimal system

1. Run **Stellar Drive Clone** application.
2. Click **Imaging** tab.
Imaging screen is displayed.
3. Select the boot volume from **Select Source** list.
Create Minimal System of Boot Volume message is displayed. Click **Image with minimal System** button.
4. **Choose Destination** button to select destination volume/folder.
5. Navigate to the destination drive/volume, specify the name for the image file and click **Save**.
6. Click **Continue** to start imaging process.



Note: Destination path must be on another hard drive.

Once the process is completed, image of the drive will be saved to the specified destination.

Restore Volume

Restore consists of two options:

Restore Volume from Folder

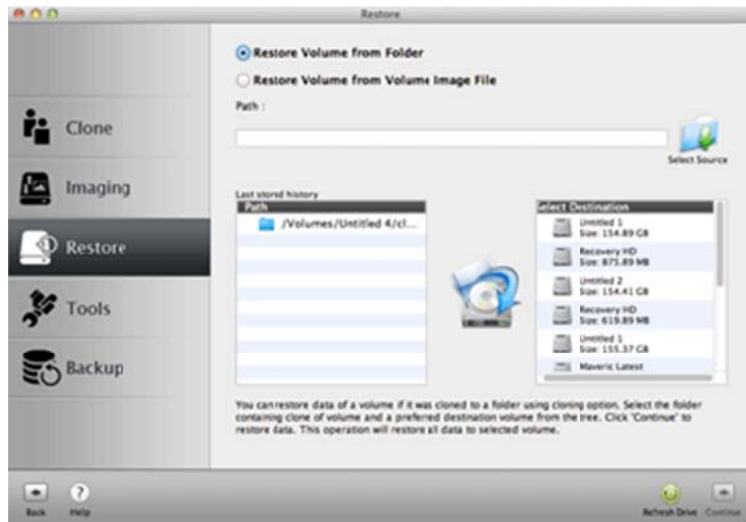
Restore Volume from Image File

Restore Volume from Folder

Backup/Clone stored in a folder can be restored back to the volume. You can use **Restore Volume from Folder** option to restore from a clone in a folder or to restore specific file or folder. It overwrites existing files with same name with the file that is saved in the clone. Restoration process by **Stellar Drive Clone** is much faster than the manual process.

To Restore Volume from a Folder

1. Run **Stellar Drive Clone** application.
2. Click **Restore** tab.
Restore screen is displayed.
3. Select **Restore Volume from Folder** option.
4. Click **Choose Source** button icon to select source drive. Select destination for the restored Volume in the **Select Destination** list.
5. Click **Continue** to start restoration process. The progress bar will indicate the process status.



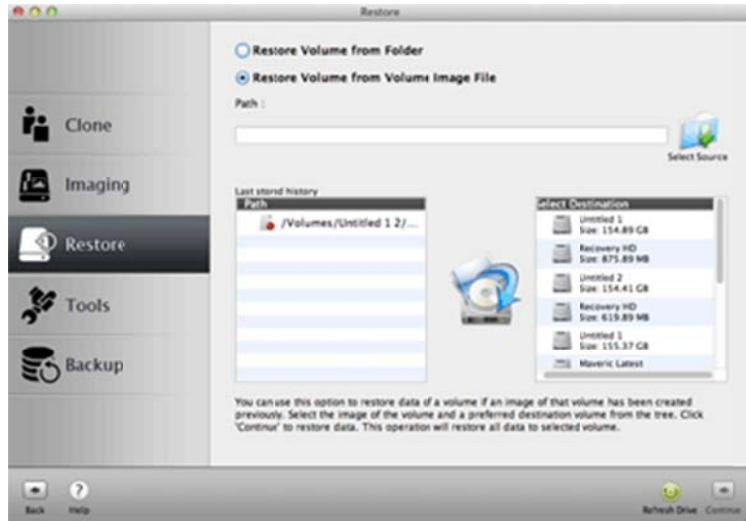
Once the process is completed, the selected folder will be restored to the destination volume.

Restore Volume from Image File

Restore Volume from an Image file allows to copy back the contents of the volume stored as image files to original state. Note that you can only restore the image file created by **Stellar Drive Clone**.

To Restore Volume from an Image File

1. Run **Stellar Drive Clone** application.
2. Click **Restore** tab.
Restore screen is displayed.
3. Select **Restore Volume from Volume Image File** option.
4. Click **Choose Source** button icon to select source drive. Select destination for the restored Volume in the **Select Destination** list.
5. Click **Continue** to start restoration process. The progress bar will indicate the process status.



Once the process is completed, selected folder will be restored to the destination volume.

Tools

Tools consist of two options:

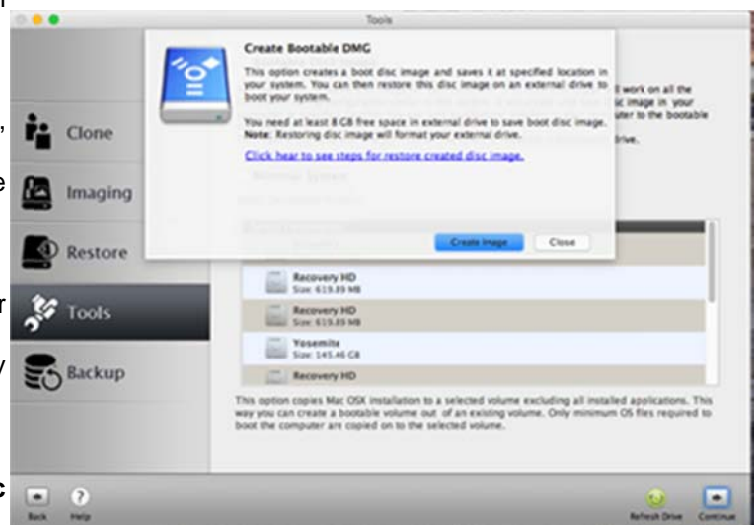
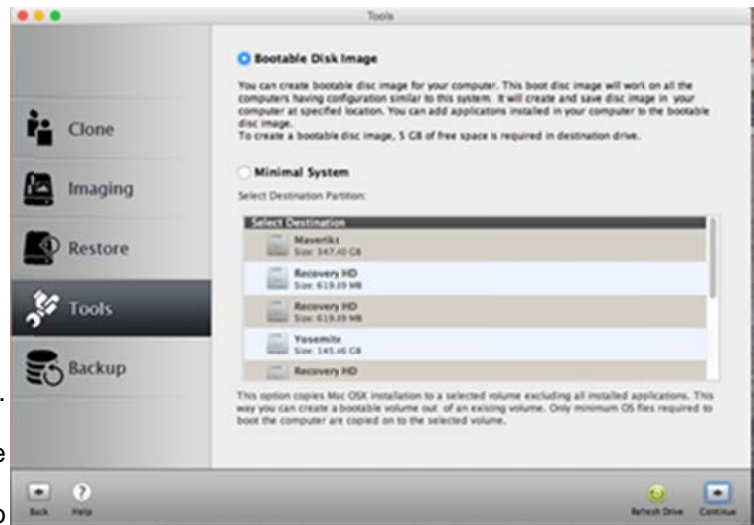
- Create Bootable DMG
- Create Minimal System Drive

Create Bootable DMG

Drive Clone gives you option to create bootable DMG. You can use the bootable DMG to boot your computer, if the operating system fails. Bootable DMG is also useful if no operating system is loaded, or the hard drive is blank.

To Create Mac OS bootable DMG

1. Run **Stellar Drive Clone** application.
2. Click **Tools** tab. **Tools** screen is displayed.
3. Select **Bootable Disk Image** option.
4. Click on **Create Image** button. Select the destination to save the **disk image** and click **Choose** to begin the image creation process.
5. After the image is created, double click on the created image to mount it.
6. Attach external media to your computer and open Disk Utility from **/Applications/Utilities**.
7. Format external media in **'Mac OS Extended (journaled)** with **'GUID Partition Table' Partition Map Scheme**.



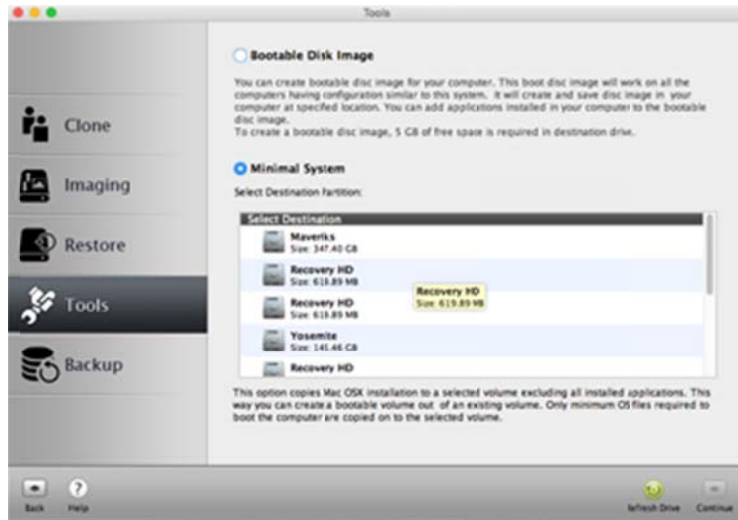
8. Select mounted image from left panel of **Disk Utility** and select **Restore** tab.
9. Drag mounted image to source and external media to destination and press **Restore** button.
10. Use your external media to boot your computer after **Restore** is completed successfully.


Note: Do not stop the image creation process in the middle. It may corrupt your hard disk.


Create Minimal System Drive

To Create Minimal System

1. Click **Tools** tab. **Tools** screen is displayed.
2. Select **Minimal System** option.
3. By default, the boot Volume is selected in *Select Source* list.



4. Select the Destination Drive from the *Select Destination* list and click **Continue**. It is recommended to select the secondary drive.
5. Click **Continue**. **Add/Remove** applications dialog box is displayed.
6. Click  button to select applications from the list of installed programs. You can also click **Find** button to add an application by browsing to its location.
7. Click **Finish Install** to start image creation.
8. You get a warning message that Copy of disk process can erase data in the destination drive completely beyond recovery, so make sure that you have taken proper backup of the important data. Click **Continue**, to proceed.
9. The progress bar shows the copying process. In case you want to stop the process in between, click **Stop** button.

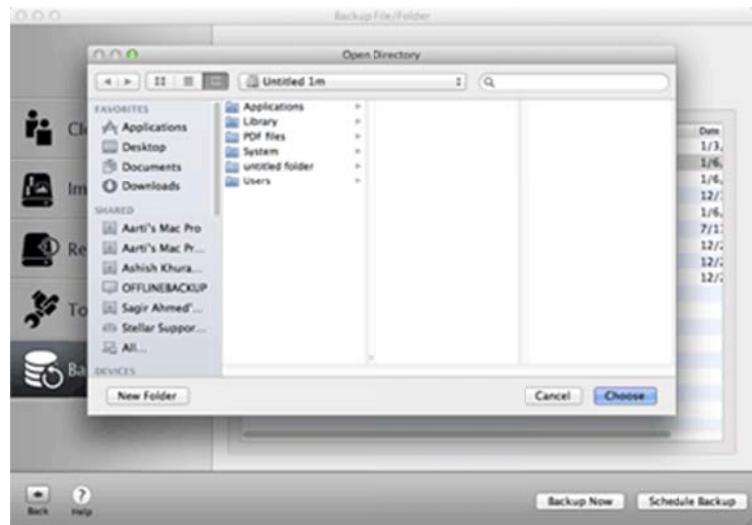
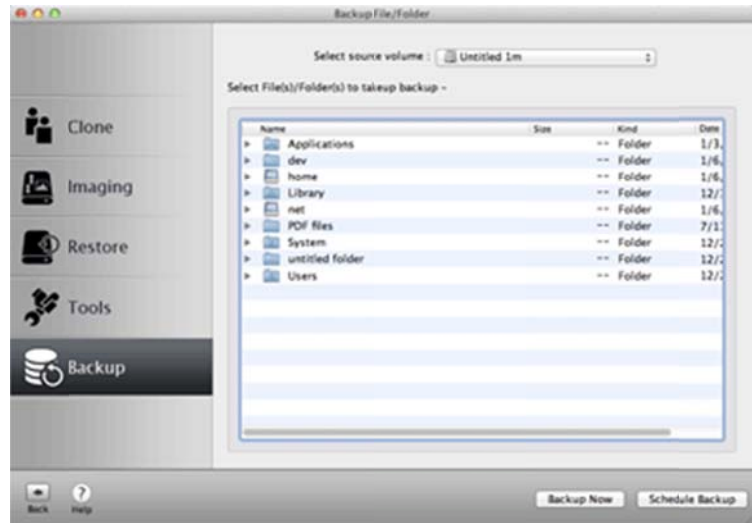
10. Once the process is completed, a window appears showing the all the installed applications in the Applications Folder.
11. Select the **desired application** from the *Applications Installed* list and click  button. The selected applications will add to the *Copies Applications* list.
12. Click **Finish Install**, to complete the process.

Backup Data

Stellar Drive Clone allows you to backup data from your Mac's hard drive. You can also set the scheduler to periodically take backup of your data.

To Backup Data from a Folder / Volume

1. Run **Stellar Drive Clone** application.
2. Click **Backup** tab. **Backup** screen is displayed.
3. Choose a volume from **Select source volume** option. A list of all files / folders of the selected volume will be displayed.
4. Select the files / folders you want to backup and click **Backup Now** button to select the destination drive.
5. Select destination for backup data from **Open Directory** dialog box.
6. Click **Choose** to select the destination and start the backup process.



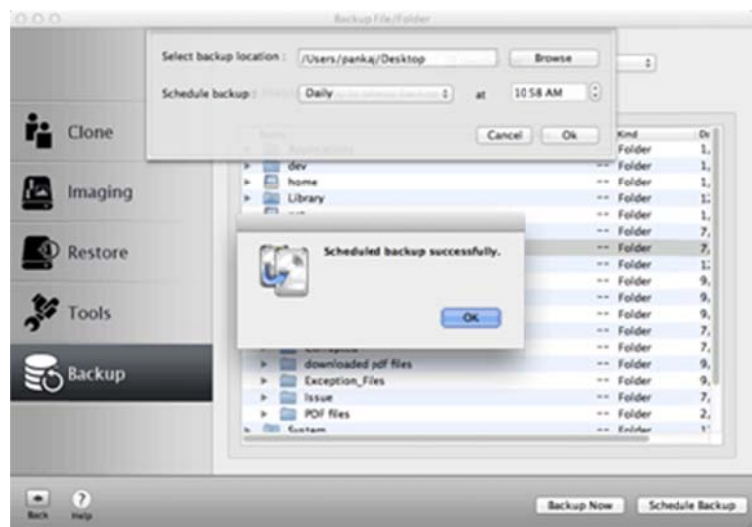
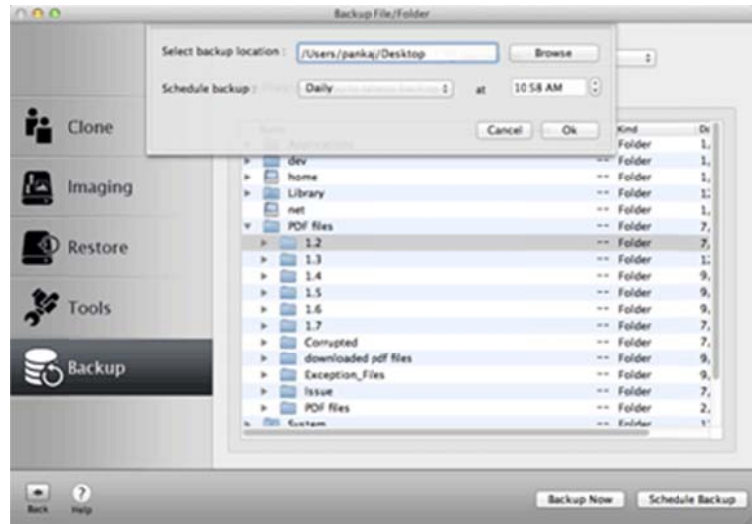
A progress bar will indicate the backup process status.

Once the backup process is completed, the files / folders will be

backed up to the selected destination.

To Schedule Periodic Backup of data from a Folder / Volume

1. Run **Stellar Drive Clone** application.
2. Click **Backup** tab button. **Backup** screen is displayed.
3. Choose a volume from **Select source volume** option. A list of all files / folders of the selected volume will be displayed.
4. Select the files / folders you want to schedule for backup and then click on **Schedule Backup** button to select the destination drive.
5. Click **Browse** button to select destination for backup data. Click **Choose** to select the destination.
6. Select backup cycle (i.e. either **Daily**, **Weekly** or **Monthly**) from **Schedule backup** option and also select the time to start the



scheduled backup process.

Click **Ok**.

Once you schedule the backup process, application will automatically backup selected files / folders periodically to the selected destination.

Troubleshooting

1. **One of my drive is shown as disabled in the Select Source list while trying Drive Clone. When I click the Continue button, Cloning failed message is displayed. How to solve the issue?**

Your drive is probably not mounted. First mount the drive and then try cloning it.

2. **When I try to clone a drive, I get a cloning failed message. The drive is shown as enabled in the Select Source list. What could be the problem?**

Your drive has probably developed bad sectors in it. Repair your drive for bad sectors and then try to clone it.

3. **I have created a clone of my drive on another drive but the volumes of the created drive are not shown any where on the desktop. Where to find them?**

Sometimes the volumes created after cloning are placed overlapping on the volumes of the source drive. You have to drag and place the volume icons to a different location on desktop. Rename the Volumes after placing to new location for identification.

4. **When I try to boot my system from destination drive after cloning the drive, the system does not boot. How to resolve this issue?**

If you are having trouble in booting your system from destination drive, remove the source drive from your system and then boot your system from destination drive.

FAQs

1. Can 'Stellar Drive Clone' create bootable drives?

Yes, Stellar Drive Clone can create bootable drives by cloning. The software creates an exact replica of the hard drive on another drive. So the clone can be used as a back up and also as a bootable disk.

2. I need to back up my personal folder to the network drive. Is it possible?

Yes, you can. Stellar Drive Clone provides an option Clone Volume to Network Drive in Clone, which will help you to create backup in the network drive.

3. Will I be able to use the free space in the destination drive after cloning the source drive?

Yes, you can. When you clone a hard drive, Stellar Drive Clone provides an option to resize the volume of the destination drive. You need to select Resize volume(s) on Destination Drive option before cloning the drive. This will allow you to resize the volume and use the free space fruitfully.

4. Can I use the clone of my old hard drive in my new system?

Yes, you can use the clone in your new system as boot drive or as backup. Remember, clone of the main hard drive can only be used as boot drive.

5. How much time is required for cloning a drive?

The time required for cloning depends on many factors. Few of them are listed below:

- Quantity of data
- Data transfer speed of the source and target drives.
- Size distribution of files on the source volume.
- Hardware interface performance.
- Method used for data transfer.
- The architecture and speed of the processor speed.

6. I have a backup of my important folder in my network, but I am not able to access it.

Why?

While cloning to network, make sure that the files and folders have all permissions. Otherwise, you won't be able to access it. In your case, the folder might not have all the permissions. So please check the read, write and execute permissions of the folder and repeat the cloning process.

7. What is MBR?

A master boot record (MBR), or partition sector, is the 512-byte boot sector that is the first sector of a partitioned data storage device such as a hard disk. It is a small program that is executed when a computer boots up.

8. What is SSD drive?

A solid-state drive (SSD) is a storage device that use semiconductor chips rather than a magnetic media. Solid state drives have several advantages over the magnetic hard drives.

Three distinct advantages are:

Less Power Usage

Faster Data Access

Higher Reliability

Mechanically SSD drives are better as there are fewer moving parts to be damaged in any sort of impact, they do have a limited life span. This comes from a fixed number of write cycles that can be done on a drive before the cells become unusable.

9. I am having NTFS file system on one of my Volumes. Can Stellar Drive Clone, clone it?

Yes, but NTFS file system will be cloned as ExFAT file system. This way you will be able to access all your important data on the drive, but cannot boot your system using that drive.

Legal Notices

Copyright

Stellar Drive Clone software, accompanied user guide and documentation are copyright of Stellar Information Technology Private Limited, with all rights reserved. Under the copyright laws, this user guide cannot be reproduced in any form without the prior written permission of Stellar Information Technology Private Limited. No Patent Liability is assumed, however, with respect to the use of the information contained herein.

Copyright © Stellar Information Technology Private Limited. INDIA.

Disclaimer

The Information contained in this manual, including but not limited to any product specifications, is subject to change without notice.

STELLAR INFORMATION TECHNOLOGY PRIVATE LIMITED PROVIDES NO WARRANTY WITH REGARD TO THIS MANUAL OR ANY OTHER INFORMATION CONTAINED HEREIN AND HEREBY EXPRESSLY DISCLAIMS ANY IMPLIED WARRANTIES OF MERCHANTABILITY OR FITNESS FOR ANY PARTICULAR PURPOSE WITH REGARD TO ANY OF THE FOREGOING STELLAR INFORMATION TECHNOLOGY PRIVATE LIMITED ASSUMES NO LIABILITY FOR ANY DAMAGES INCURRED DIRECTLY OR INDIRECTLY FROM ANY TECHNICAL OR TYPOGRAPHICAL ERRORS OR OMISSIONS CONTAINED HEREIN OR FOR DISCREPANCIES BETWEEN THE PRODUCT AND THE MANUAL. IN NO EVENT SHALL STELLAR INFORMATION TECHNOLOGY PRIVATE LIMITED, BE LIABLE FOR ANY INCIDENTAL, CONSEQUENTIAL SPECIAL, OR EXEMPLARY DAMAGES, WHETHER BASED ON TORT, CONTRACT OR OTHERWISE, ARISING OUT OF OR IN CONNECTION WITH THIS MANUAL OR ANY OTHER INFORMATION CONTAINED HEREIN OR THE USE THEREOF.

Trademarks

Stellar Drive Clone® is a registered trademark of Stellar Information Technology Private Limited.

Mac OS X® is a registered trademark of Apple Computers.

All Trademarks Acknowledged.

All other brands and product names are trademarks or registered trademarks of their respective companies.

License Agreement

License Agreement - Stellar Drive Clone.

Stellar Drive Clone.

Copyright © Stellar Information Technology Private Limited. INDIA.

www.stellarinfo.com

All rights reserved.

All product names mentioned herein are the trademarks of their respective owners.

This license applies to the standard-licensed version of Stellar Drive Clone.

Your Agreement to this License

You should carefully read the following terms and conditions before using, installing or distributing this software, unless you have a different license agreement signed by Stellar Information Technology Private Limited.

If you do not agree to all of the terms and conditions of this License then do not copy, install, distribute or use any copy of Stellar Drive Clone with which this License is included, you may return the complete package unused without requesting an activation key within 30 days after purchase for a full refund of your payment.

The terms and conditions of this License describe the permitted use and users of each Licensed Copy of Stellar Drive Clone. For purposes of this License, if you have a valid single-user license, you have the right to use a single Licensed Copy of Stellar Drive Clone. If you or your organization has a valid multi-user license, then you or your organization has the right to use up to a number of Licensed Copies of Stellar Drive Clone equal to the number of copies indicated in the documents issued by Stellar when granting the license.

Scope of License

Each Licensed Copy of Stellar Drive Clone may either be used by a single person or used non-simultaneously by multiple people who use the software personally installed on a single workstation. This is not a concurrent use license.

All rights of any kind in Stellar Drive Clone, which are not expressly granted in this license, are entirely and exclusively reserved to and by Stellar Information Technology Private Limited. You may not rent, lease, modify, translate, reverse engineer, decompile, disassemble or create derivative works based on Stellar Drive Clone nor permit anyone else to do so. You may not

make access to Stellar Drive Clone available to others in connection with a service bureau, application service provider or similar business nor permit anyone else to do so.

Warranty Disclaimers and Liability Limitations

Stellar Drive Clone and all accompanying software, files, data and materials are distributed and provided AS IS and with no warranties of any kind, whether expressed or implied. You acknowledge that good data processing procedure dictates that any program including Stellar Drive Clone must be thoroughly tested with non-critical data before there is any reliance on it and you hereby assume the entire risk of all use of the copies of Stellar Drive Clone covered by this License. This disclaimer of warranty constitutes an essential part of this License.

In addition, in no event does Stellar authorize you or anyone else to use Stellar Drive Clone in applications or systems where its failure to perform can reasonably be expected to result in a significant physical injury or in loss of life. Any such use is entirely at your own risk and you agree to hold Stellar harmless from any and all claims or losses relating to such unauthorized use.

In no event shall Stellar Information Technology Private Limited or its suppliers be liable for any special, incidental, indirect, or consequential damages whatsoever (including, without limitation, damages for loss of business profits, business interruption, loss of business information, or any other pecuniary loss) arising out of the use of or inability to use the software product or the provision of or failure to provide support services, even if Stellar Information Technology Private Limited has been advised of the possibility of such damages. In any case, Stellar Information Technology Private Limited's entire liability under any provision shall be limited to the amount actually paid by you for the software product.

General

This License is the complete statement of the agreement between the parties on the subject matter and merges and supersedes all other or prior understandings, purchase orders, agreements and arrangements. This License shall be governed by the laws of the State of Delhi, India. Exclusive jurisdiction and venue for all matters relating to this License shall be in courts and fora located in the State of Delhi, India and you consent to such jurisdiction and venue. There are no third party beneficiaries of any promises, obligations or representations made by Stellar herein. Any waiver by Stellar of any violation of this License by you shall not constitute nor contribute to a waiver by Stellar of any other or future violation of the same provision or any other provision of this License.

Copyright © Stellar Information Technology Private Limited. All rights reserved.

About Stellar

Stellar Information Technology Private Limited is a trusted name in the field of Data Recovery and Data Protection Software for more than a decade.

We provide the widest range of Data Recovery Products. Our range includes Data Recovery Software for almost all Operating Systems and File Systems.

Product line:

Data Recovery

A widest range of data recovery software that helps you recover your valued data lost after accidental format, virus problems, software malfunction, file/directory deletion, or even sabotage!.

[More Info >>](#)

File Recovery

The most comprehensive range of file undelete and unerase software for Windows and MS office repair tools. [More Info >>](#)

E-mail Recovery

A wide range of e-mail recovery, e-mail repair and e-mail conversion applications for MS Outlook, MS Outlook Express and MS Exchange useful in instances of data loss due to damages and corruption of E-mail. [More Info >>](#)

Data Protection

A wide range of Prevent Data Loss, Data backup and Hard Drive Monitoring Applications to ensure complete data protection against hard drive crash. [More Info >>](#)

Data Sanitization

Data cleanup and file eraser utility can delete selected folders, groups of files, entire logical drives, System Traces & Internet traces. Once the data have been removed using Stellar Wipe - Data File eraser utility, it is beyond recovery limits of any Data Recovery Software or utility. [More Info >>](#)

For more information about us, please visit www.stellarinfo.com