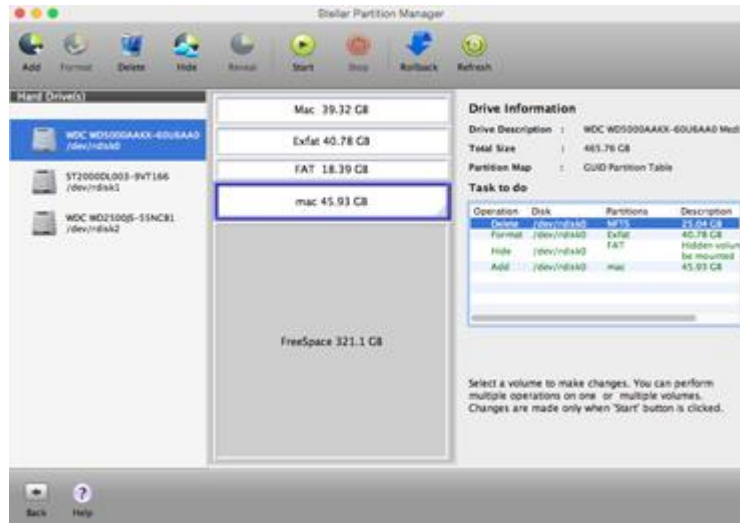




Stellar
Partition Manager 3.0
User Guide

Overview

Some times it becomes necessary to change the number of existing partitions in the drive. It may be that you want to load a second OS, or want to keep OS and data with different categories, in separate volumes. A partition can be deleted to make it available for a different OS or some other purpose. Partition management becomes easier with **Stellar Partition Manager**.



Stellar Partition Manager is Mac software to manage drive partitions. You can create a new partition, change size of an existing partition, delete a partition, or hide or reveal partition. To manage boot hard drive, you need to boot the system with the help of another drive or bootable media. You can use **Stellar Partition Manager** to create a bootable DMG.

What's new in this version?

- Supports NTFS File System (Boot Camp Support).

Key Features:

- Supports GUID partition table and Apple partition map.
- Supports FAT partitions.
- Creates new partition from total free space available in drive.
- Resize partition without data loss.

- Performs data verification while shifting and resizing partitions.
- Fast shift option is used for moving partitions quickly.
- Multiple tasks can be added in a list to perform as a batch operation.
- Optimizes free space before resizing a partition, if necessary.
- Format option erases complete data from a partition.
- Hide option secures the partition from unwanted user access.
- Reveal option mounts the hidden partition.

Why Stellar Partition Manager?

Add a Partition

Stellar Partition Manager allows creating a new partition in the hard drive. The space required for the proposed partition is extracted from available free space or unused space in the drive.

Format a Partition

Format feature helps erase data from the partition. If a partition contains data that is no more required, format option can be used to remove data and assign the space as unused.

Delete a Partition

Delete option allows users to remove any partition from the hard drive. All data in it will be erased beyond recovery. The deleted volume will be marked as free space and can be used to create new partition.

Hide a Partition

Using Hide option, you can unmount partition/volume temporarily to secure your volume from being accessed by unwanted users. The hidden volume will not be visible and will not mount automatically under normal circumstances. **Stellar Partition Manager** renames the hidden volume with automatically generated disk identifier name. But in some cases, the hidden volume may retain its original name.

Reveal a Partition

Using Reveal option, you can mount the hidden volume back to the system. The revealed partition restores its original name. It should be noted that a hidden partition can be revealed only by **Stellar Partition Manager**. The hidden partition will be visible in other applications, but you will not be able to select or mount the partition.

Resize a Partition

You can expand or trim partition size. If a partition needs more space or it has too much space, you can use resize feature of **Stellar Partition Manager**. Resizing depends on the available space. You can decrease the partition size, only if free space is available in it. Increasing the size of partition can be done if free space is available in the drive.

Installation Procedure

Before installing the software, ensure that your system meets minimum system requirements.

Minimum System Requirements

- **Processor:** Intel
- **Operating System:** Snow Leopard 10.6 up to Mavericks 10.9 and above
- **Memory:** 1 GB RAM
- **Hard Disk:** 50 MB of free space

Steps to install Stellar Partition Manager

- Unpack **StellarPartitionManager.dmg.zip** file.
- Decompressing the zip file and double click the **.dmg** file. This step will mount a virtual volume - **StellarPartitionManager**.
- Double-click **StellarPartitionManager** volume to open **StellarPartitionManager** application window.
- Drag **Stellar Partition Manager** file to the **Applications** folder.
- To launch the software, double click on **StellarPartitionManager** file in **Applications** folder.
- This displays **License Agreement**. If user accepts the **License Agreement**, then the software is launched; otherwise, it terminates.



Stellar Partition Manager does not provide support for VMware and Time Machine backup applications.



Stellar Partition Manager does not provide support for encrypted file system.



To remove the software, drag and drop the **Stellar Partition Manager** file from **Applications** folder to **Trash**.

Order and Register

Order Stellar Partition Manager

The software can be purchased online. For price details and to place an order, click [here](#)

Once the order is confirmed, a pre-paid registration key will be sent through e-mail, which would be required to register the software.

Register Stellar Partition Manager

To register Stellar Partition Manager:

1. On the **Tools** menu, click **Register**. Registration window is displayed.
2. Do one of the following:
 - If you have to purchase the product,
 - Select '*I don't have a key to register the product*'. Click **OK**, to purchase the product.
 - If you have purchased the product and received registration key,
 - a. Select '*I have a key to register the product*' option. Click **OK**.
 - b. In the Registration Key box, type the key. Click **OK**.

How to Update?

Update feature available in **Stellar Partition Manager** allows you to check the latest updates. This will help you keep your application up-to-date. If updates are available for the product, update wizard pops up when you run **Stellar Partition Manager**. Otherwise, you can use **Updates** under **Preferences** in the **Stellar Partition Manager** menu.

To Update Stellar Partition Manager, do one of the following:

- **To check automatically:**
 1. Run **Stellar Partition Manager**, *Update* screen is displayed along with the main user interface.
 2. To download the latest version, click **Update** button. It may take few seconds to minutes to download the files. Once completed, '*Update successfully installed*' message appears.
 3. Click **OK**. Click **Cancel** to check for updates manually.
- **To check manually:**
 1. Run **Stellar Partition Manager** application.
 2. Click **Continue** button.
 3. On the **StellarPartitonManager** menu, click **Preferences** option.
 4. Click **General** tab in the **Preferences** screen. Click **Check for updates now** option.
 5. If updates are available, Update screen is displayed. Follow the next step. If no updates are available, a message that '*There are no updates available*' is displayed.
 6. Click **Update** button to download the latest version. It may take few seconds to minutes to download the files. After completion, '*Update successfully installed*' message appears. Click **OK**.

After latest updates are installed, restart **Stellar Partition Manager**.

Stellar Support

Our Technical Support professionals will give solutions for all your queries related to Stellar Products.

You can either **Call Us** or **Go Online** to our support section at <http://stellarinfo.com/support/>

For **price details** and to **place the order**, click <http://www.stellarinfo.com/mac-software/partition-mac/buy-now.php>

Chat Live with an **Online technician** at <http://stellarinfo.com/support/>

Search in our extensive **Knowledge Base** at <http://www.stellarinfo.com/support/kb/>

Submit enquiry at <http://www.stellarinfo.com/support/enquiry.php>

E-mail to Stellar Support at support@stellarinfo.com

Support Helpline

Monday to Friday [24 Hrs. a day]

USA (Tollfree- Pre Sales Queries) +1-877-778-6087

USA (Post Sales Queries) +1-732-584-2700

UK (Europe) +44-203-026-5337

Australia & Asia Pacific +61-280-149-899

Netherlands Pre & Post Sales Support +31-208-111-188

Worldwide +91-124-432-6777

Email Orders orders@stellarinfo.com

Starting the Software

Follow any of the following methods to run **Stellar Partition Manager** on a Mac system.

- Double click on **Stellar Partition Manager** file in **Applications** folder.
- Double-click on **Stellar Partition Manager** desktop shortcut (if it is created).
- Click on **Stellar Partition Manager** icon in the dock (if it is created).

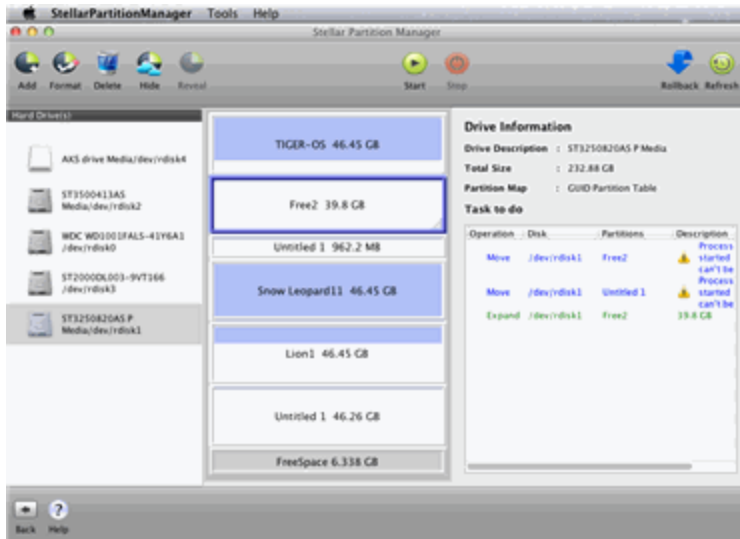
Main User Interface

Stellar Partition Manager has a simple and easy to use graphical user interface allowing the user to manage Mac partitions easily and quickly.



Stellar Partition Manager Introduction Screen

After this main introduction page of the software the next screen is,



The main user interface is arranged as follows:

- **Toolbar**, which contains all the managing tools.
- **Left pane** shows the attached Hard Drive(s) list.
- **Middle pane** shows the partition(s) of the selected Drive.
- **Right pane** shows the drive information along with the task to do list information.

Menus

StellarPartitionManager

About Stellar Partition Manager

Use this option to read information about **Stellar Partition Manager**.

License Agreement

Use this option to view the license agreement.

Preferences...

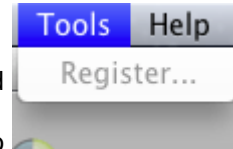
Use this option to set [preferences](#) for **Stellar Partition Manager** and personalize the process.



Tools

Register...

This option is enabled when you are using unregistered version of **Stellar Partition Manager** application. Use it to register your product.



Help

Help Topics...

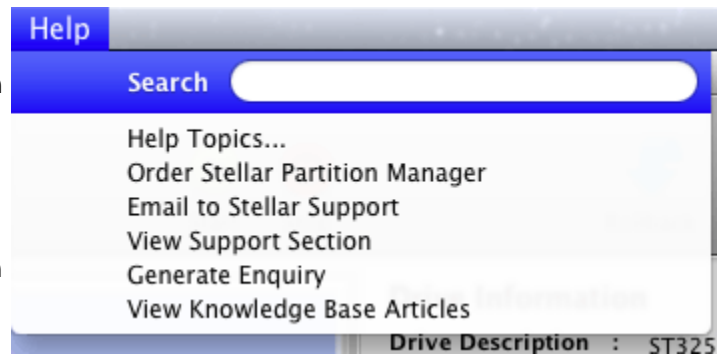
Use this option to view **Stellar Partition Manager** help manual.

Order Stellar Partition Manager

Use this option to [buy](#) **Stellar Partition Manager**.

Email to Stellar Support

Use this option to [mail for support](#) against any problem.



View Support Section

Use this option to visit [support_page](#) of [stellarinfo.com](#).

Generate Enquiry

Use this option to [submit_enquiry](#) to [stellarinfo.com](#).

View Knowledge Base Articles

Use this option to visit [Knowledge Base articles](#) of [stellarinfo.com](#).

Tools and Buttons

Add



This button is located on the main screen of **Stellar Partition Manager**. Click it to create new partition.

Format



This button is located on the main screen of **Stellar Partition Manager**. Click it to format a partition and erase all its data.

Delete



This button is located on the main screen of **Stellar Partition Manager**. Click it to delete a partition.

Hide



This button is located on the main screen of **Stellar Partition Manager**. Click it hide a partition from drive list.

Reveal



This button is located on the main screen of **Stellar Partition Manager**. Click it to reveal the hidden partition.

Start



This button is located on the main screen of **Stellar Partition Manager**. Click it to start a process.

Stop



This button is located on the main screen of **Stellar Partition Manager**. It is enabled only when a process is running. Click it to stop a process.

Rollback



This button is located on the main screen of **Stellar Partition Manager**. Click it to cancel an operation.

Refresh



This button is located on the main screen of **Stellar Partition Manager**. Click it to reload the current view.

Help



This button is located on the main screen of **Stellar Partition Manager**. Click it to view the attached help manual.

Back



This button is located on the main screen of **Stellar Partition Manager**. Click it to move to application's Introduction screen.

Continue



This button is located on the Introduction screen of **Stellar Partition Manager**. Click it to continue to next screen of application.

How To...



Add a Partition

Format a Partition

Delete a Partition

Hide and Reveal a Partition

Resize an Existing Partition




Create Bootable DMG

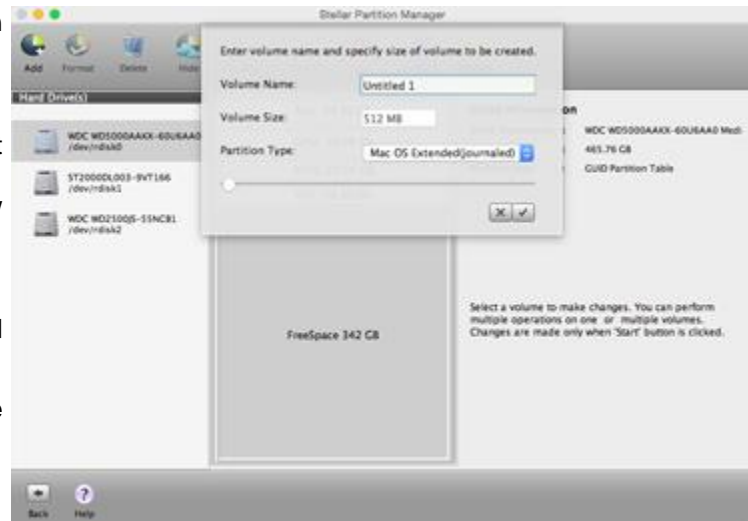
Set Preferences

Add Partition

You can add a new partition to the existing list of partition. Space for the new partition is collected from the available unused space in the drive.

To create a new partition

1. Run **Stellar Partition Manager**. Click **Continue** button.
2. In the left pane, select the Hard Drive in which a new partition is to be created.
3. On the toolbar, click **Add**  button. **Add New Volume** dialog box is displayed.
4. In the **Volume Name** box, type a name for the new partition. Move the slider to specify size for the partition. Selected size is displayed in Volume Size box.
5. Click **OK** button .
6. Task to add the "new partition" is added in the **Task to do** list along with other added tasks (if any). Click **Start**  button to start the listed tasks.
7. A warning message is displayed. Click **Continue** after



making sure that proper backup of important data is present in the selected drive.

After completion of process, newly added partition will be shown in the middle pane along with other partitions.





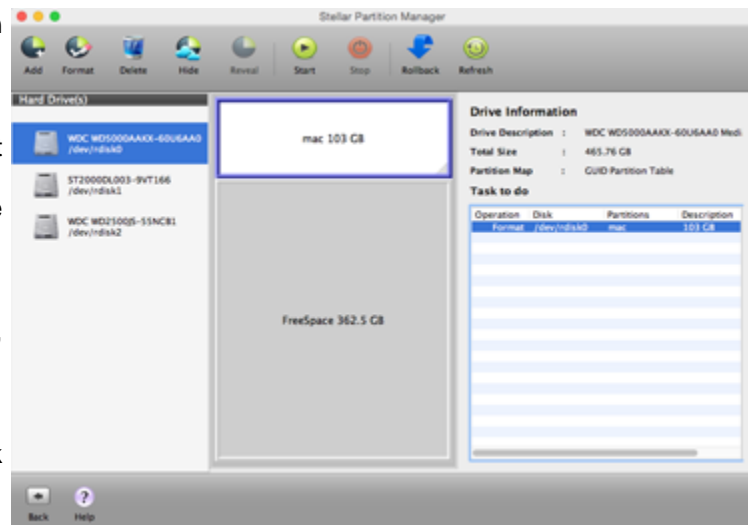
Space required for the new partition is collected from the free space available in the selected drive.

Format a Partition

You can format a partition to erase all its content, install a new operating system or rearrange drive partitions.

To format a partition

1. Run **Stellar Partition Manager**. Click **Continue** button.
2. In the left pane, select the Hard Drive that contains the partition that is to be formatted.
3. In the middle pane, select the required partition.
4. On the toolbar, click **Format**  button.
5. Task to format the "partition" is added in the Task to do list along with other added tasks (if any). Click **Start**  button to start the listed tasks.
6. A warning message is displayed. Click **Continue** after making sure that proper backup of important data is present in the selected drive.





After format operation is complete, all the

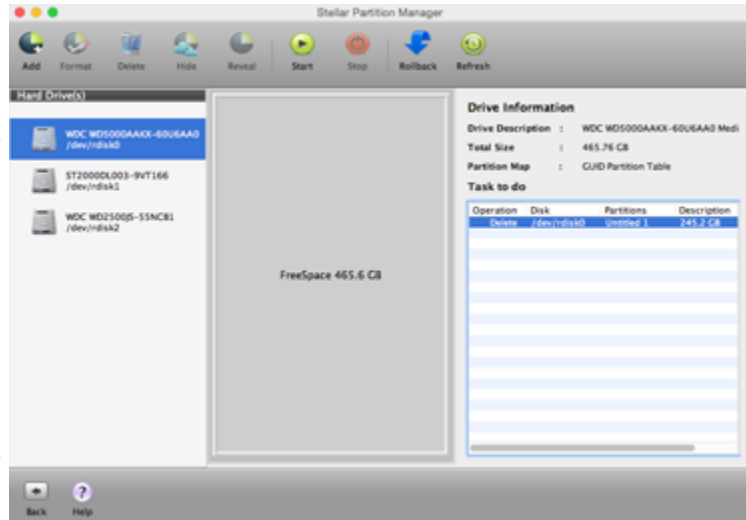
content of the partition is erased.

Delete a Partition

You can delete a partition to increase unused space for rearranging drive partitions or some other usage.

To delete a partition

1. Run **Stellar Partition Manager**. Click **Continue** button.
2. In the left pane, select the Hard Drive that contains the partition that is to be deleted.
3. In the middle pane, select the required partition.
4. On the toolbar, click **Delete**  button.
5. Task to delete the "partition" is added in the Task to do list along with other added tasks (if any). Click **Start**  button to start the listed tasks.
6. A warning message is displayed. Click **Continue** after making sure that proper backup of important data is present the selected drive.



After completion of delete operation, the deleted partition is removed from list of partitions and the deleted space is added

to free space.





Once you delete a partition, data of the deleted partition is erased beyond recovery.

Hide and Reveal a Partition



A partition can be hidden to avoid access or tampering of data stored in that partition. **Stellar Partition Manager** gives easy method to hide or reveal a partition.

To hide a partition

1. Run **Stellar Partition Manager**. Click **Continue** button.
2. In the left pane, select the Hard Drive that contains the partition that is to be hidden.
3. In the middle pane, select the required partition.
4. On the toolbar, click **Hide**  button.
5. Task to hide the "partition" is added in the **Task to do** list along with other added tasks (if any). Click **Start**  button to start the listed tasks.
6. A warning message is displayed. Click **Continue** after making sure that proper backup of important data is present in the selected drive.

The hidden volume will appear on the middle pane with an automatically generated disk identifier name. But in some cases, the hidden volume will retain its original name. When you hide a volume, it is temporarily unmounted.

To reveal a partition


1. Run **Stellar Partition Manager**. Click **Continue** button.
 2. In the left pane, select the Hard Drive that contains the hidden partition.
 3. In the middle pane, select the required partition.
 4. On the toolbar, click **Reveal**  button.
 5. Task to reveal the "partition" is added in the **Task to do** list along with other added tasks (if any). Click **Start**  button to start the listed tasks.
 6. A warning message is displayed. Click **Continue** after making sure that proper backup of important data is present in the selected drive.
- Once the hidden volume is revealed, it will be again visible in the system.

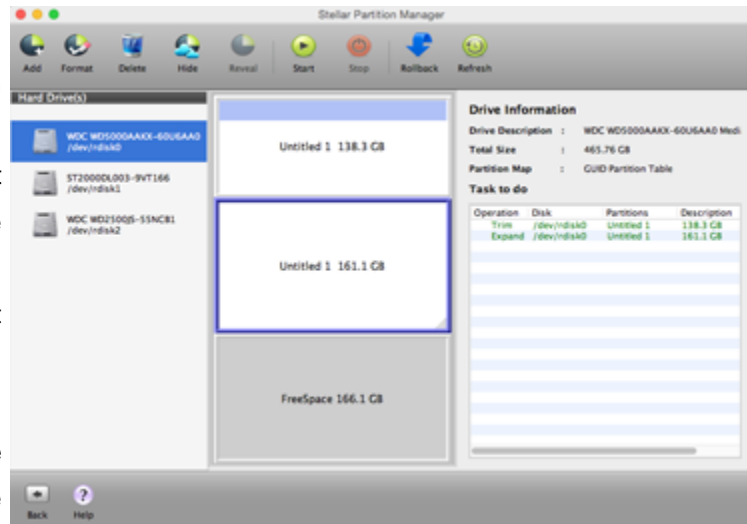
Note Only **Stellar Partition Manager** can reveal a partition hidden using it. Hidden partition can be visible in other applications or utilities but can not be selected for any operation.

Resize an Existing Partition

Many people create drive partitions according to file categories. If at any time the partition goes out of space, it should be resized to accommodate the latest requirements. Extra space needed is taken out from unused or free space available in the drive.

To resize a partition

1. Run **Stellar Partition Manager**. Click **Continue** button.
2. In the left pane, select the Hard Drive that contains the partition that is to be resized.
3. In the middle pane, select the required partition.
4. Click on the partition edge. While keeping the mouse button pressed drag the edge upwards or downwards to get partition of required size. New size is shown in the partition area.
5. Task to trim or expand (according to the case) the "partition" is added in the Task to do list along with other added tasks (if any). Click **Start**  button to start the listed tasks.
6. A warning message is displayed. Click **Continue** after making sure that proper backup of important data is present in the selected drive.



If partition size is increased, the added amount of space is subtracted from the available free space. If partition size is decreased, the subtracted amount of space is added to the available free space.

Create Bootable DMG

Stellar Partition Manager gives you option to create bootable DMG. You can use the bootable DMG to boot your computer, if the operating system fails. Bootable DMG is also useful if no operating system is loaded, or the hard drive is blank.

To create a bootable DMG:

1. Run **Stellar Partition Manager**.
2. Select boot volume and click **Create Bootable DMG**.
3. Click on **Create Image** button. Select the destination to save the **disk image** and click **Choose** to begin the image creation process.
4. After the image is created, double click on the created image to mount it.
5. Attach external media to your computer and open Disk Utility from **'Applications/Utilities'**.
6. Format external media in **'Mac OS Extended (journaled) with 'GUID Partition Table' Partition Map Scheme'**.
7. Select mounted image from left panel of **Disk Utility** and select **Restore** tab.
8. Drag mounted image to source and external media to destination and press **Restore** button.
9. Use your external media to boot your computer after **Restore** is completed successfully.



- **Create Bootable DMG** option is available for boot volume only.
- Do not stop the image creation process in the middle. It may corrupt your hard disk.

Set Preferences

Preferences can be set to execute the **Stellar Partition Manager** software according to personal requirement.

To set the preferences

1. Run **Stellar Partition Manager** application.
2. Click **Continue** button.
3. On the **StellarPartitionManager** menu, click **Preferences** option.
4. To change general preferences, click **General** tab.
5. To change monitoring preferences, click **Monitoring** tab.

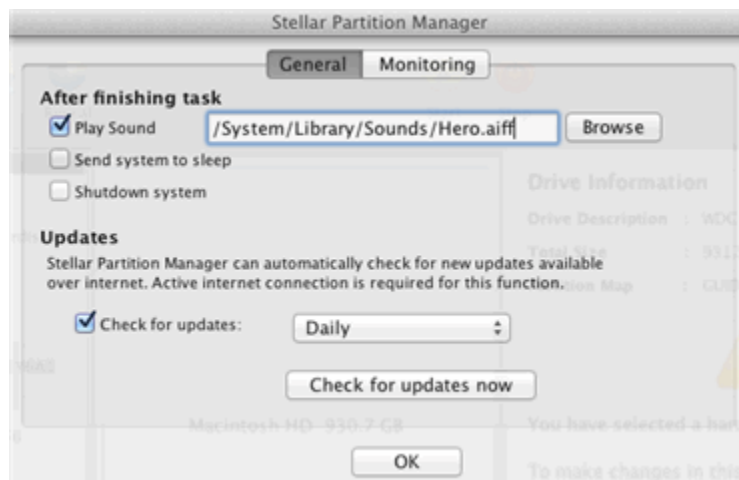


General

General preferences allow setting tasks that will be performed at the end of any process in **Stellar Partition Manager**.

To change finish task preferences

1. Click **General** tab in the **Preferences** screen.
2. In the **After finishing task** section,
 - To assign a sound that will be played at the end of process, select **Play Sound** option. Click **Browse** button to select a saved sound file.
 - To send the system to sleep at the end of process, select **Send system to sleep** option.
 - To shutdown the system at end of process, select **Shutdown system**.
 - Click **OK** button to save the settings.



To change update task preferences

1. Click **General** tab in the **Preferences** screen.
2. In the **Updates** section,
 - To assign a frequency for checking of updates, select **Check for updates** option.
 - Select the frequency in the list.

- Click **OK** button to save the settings. To check for current updates, click **Check for updates now** button.

Monitoring

Monitoring preferences allows you to choose volume shifting by **Stellar Partition Manager** with or without verification of moved data written at a new location. Verification of data helps in preventing data loss. Note that process will get a bit slower when this option is selected. **Fast shifting** performs the task quickly.

To verify the write process after completion of task,

1. Select **Verify After Writes** option.
2. Click **OK** button.

For fast shifting of the volume,

1. Select **Fast shifting** option.
2. Click **OK** button.

Possible Errors While Using Stellar Partition Manager

1. **When I try to increase the size of a partition, I get a "Stellar Partition Manager unable to resize partition" message. What could be the problem?**

Your partition may have bad sectors or may have some volume error in it. First repair the partition and then resize it.

2. **I am able to select a partition but I am not able to perform any operation on it. All the buttons except Add button are disabled. How to solve this issue?**

Your partition is probably formatted with FAT or exFAT file system. **Stellar Partition Manager** software supports Mac OS Extended (Journaled), Mac OS Extended, Mac OS Extended (Case-Sensitive, Journaled), Mac OS Extended (Case-Sensitive).

3. **I am trying to add a new partition and free space is available in my drive. When I add a partition "Insufficient free space to add a new partition" message is displayed. How to solve this issue?**

Minimum 512 MB of space should be free in the drive while creating a new partition.

4. **Stellar Partition Manager application freezes and stops responding while trying to perform any operation. What could be the case?**

If **Stellar Partition Manager** software hangs during a run, it may be possible that the concerned partition has some bad sectors. You have to remove bad sectors from the drive volume before performing any operation on it.

FAQs

1. **I have a 5 GB Mac partition with 1 GB of data. I need to split the partition for creating a new one with 3 GB. Is it possible using Stellar Partition Manager?**

Yes, you can create a new partition from the space available in the existing partition. You need to drag and reduce the volume to the desired size and then add a new partition.

2. **Can I manage boot partition?**

Yes, **Stellar Partition Manager** allows you to manage boot partition using bootable DMG.

3. **How many tasks can be added in Task to do list?**

Any number of tasks can be added.

4. **Is it possible to merge two partitions using Stellar Partition Manager?**

No, you cannot merge two partitions.

5. **Disk Utility is showing a disk in hidden mode. I am not able to mount it or select it. Why?**

Hidden Partition can be revealed only by using **Stellar Partition Manager**. So, you should use the **Reveal** option of **Stellar Partition Manager** to mount it back. You will be able to view the hidden partition using other application or utility like Disk Utility, but you cannot select or mount it.

6. **I am not able to resize my partition even though I have enough free space available. What can be the reason?**

It may be that your partition has bad sectors present in it. First you have to remove the bad sectors and then try to resize. Or, possibly your partition has some errors in it.

Legal Notices

Copyright

Stellar Partition Manager software, accompanied user manual and documentation are copyright of Stellar Information Technology Private Limited, with all rights reserved. Under the copyright laws, this user manual cannot be reproduced in any form without the prior written permission of Stellar Information Technology Private Limited. No Patent Liability is assumed, however, with respect to the use of the information contained herein.

Copyright © Stellar Information Technology Private Limited. All rights reserved.

Disclaimer

The Information contained in this manual, including but not limited to any product specifications, is subject to change without notice.

STELLAR INFORMATION TECHNOLOGY PRIVATE LIMITED PROVIDES NO WARRANTY WITH REGARD TO THIS MANUAL OR ANY OTHER INFORMATION CONTAINED HEREIN AND HEREBY EXPRESSLY DISCLAIMS ANY IMPLIED WARRANTIES OF MERCHANTABILITY OR FITNESS FOR ANY PARTICULAR PURPOSE WITH REGARD TO ANY OF THE FOREGOING STELLAR INFORMATION TECHNOLOGY PRIVATE LIMITED ASSUMES NO LIABILITY FOR ANY DAMAGES INCURRED DIRECTLY OR INDIRECTLY FROM ANY TECHNICAL OR TYPOGRAPHICAL ERRORS OR OMISSIONS CONTAINED HEREIN OR FOR DISCREPANCIES BETWEEN THE PRODUCT AND THE MANUAL. IN NO EVENT SHALL STELLAR INFORMATION TECHNOLOGY PRIVATE LIMITED, BE LIABLE FOR ANY INCIDENTAL, CONSEQUENTIAL SPECIAL, OR EXEMPLARY DAMAGES, WHETHER BASED ON TORT, CONTRACT OR OTHERWISE, ARISING OUT OF OR IN CONNECTION WITH THIS MANUAL OR ANY OTHER INFORMATION CONTAINED HEREIN OR THE USE THEREOF.

Trademarks

Stellar Partition Manager® is a registered trademark of Stellar Information Technology Private Limited.

Mac OS X® is a registered trademark of Apple Computers.

All Trademarks Acknowledged.

All other brands and product names are trademarks or registered trademarks of their respective companies.

License Agreement

Stellar Partition Manager

Copyright © Stellar Information Technology Private Limited. INDIA.

www.stellarinfo.com

All rights reserved.

All product names mentioned herein are the trademarks of their respective owners.

This license applies to the standard-licensed version of Stellar Partition Manager.

Your Agreement to this License

You should carefully read the following terms and conditions before using, installing or distributing this software, unless you have a different license agreement signed by Stellar Information Technology Private Limited.

If you do not agree to all of the terms and conditions of this License then do not copy, install, distribute or use any copy of Stellar Partition Manager with which this License is included, you may return the complete package unused without requesting an activation key within 30 days after purchase for a full refund of your payment.

The terms and conditions of this License describe the permitted use and users of each Licensed Copy of Stellar Partition Manager. For purposes of this License, if you have a valid single-user license, you have the right to use a single Licensed Copy of Stellar Partition Manager. If you or your organization has a valid multi-user license, then you or your organization has the right to use up to a number of Licensed Copies of Stellar Partition Manager equal to the number of copies indicated in the documents issued by Stellar when granting the license.

Scope of License

Each Licensed Copy of Stellar Partition Manager may either be used by a single person or used non-simultaneously by multiple people who use the software personally installed on a single workstation. This is not a concurrent use license.

All rights of any kind in Stellar Partition Manager, which are not expressly granted in this license, are entirely and exclusively reserved to and by Stellar Information Technology Private Limited. You may not rent, lease, modify, translate, reverse engineer, decompile, disassemble or create derivative works based on Stellar Partition Manager nor permit anyone else to do so. You may not make access to Stellar Partition Manager available to others in connection with a service bureau, application service provider or similar business nor permit anyone else to do so.

Warranty Disclaimers and Liability Limitations

Stellar Partition Manager and all accompanying software, files, data and materials are distributed and provided AS IS and with no warranties of any kind, whether expressed or implied. You acknowledge that good data processing procedure dictates that any program including Stellar Partition Manager must be thoroughly tested with non-critical data before there is any reliance on it and you hereby assume the entire risk of all use of the copies of Stellar Partition Manager covered by this License. This disclaimer of warranty constitutes an essential part of this License. In addition, in no event does Stellar authorize you or anyone else to use Stellar Partition Manager in applications or systems where its failure to perform can reasonably be expected to result in a significant physical injury or in loss of life. Any such use is entirely at your own risk and you agree to hold Stellar harmless from any and all claims or losses relating to such unauthorized use.

In no event shall Stellar Information Technology Private Limited or its suppliers be liable for any special, incidental, indirect, or consequential damages whatsoever (including, without limitation, damages for loss of business profits, business interruption, loss of business information, or any other pecuniary loss) arising out of the use of or inability to use the software product or the provision of or failure to provide support services, even if Stellar Information Technology Private Limited has been advised of the possibility of such damages. In any case, Stellar Information Technology Private Limited's entire liability under any provision shall be limited to the amount actually paid by you for the software product.

General

This License is the complete statement of the agreement between the parties on the subject matter and merges and supersedes all other or prior understandings, purchase orders, agreements and arrangements. This License shall be governed by the laws of the State of Delhi, India. Exclusive jurisdiction and venue for all matters relating to this License shall be in courts and fora located in the State of Delhi, India and you consent to such jurisdiction and venue. There are no third party beneficiaries of any promises, obligations or representations made by Stellar herein. Any waiver by Stellar of any violation of this License by you shall not constitute nor contribute to a waiver by Stellar of any other or future violation of the same provision or any other provision of this License.

Copyright © Stellar Information Technology Private Limited. All rights reserved.

About Stellar

Stellar Information Technology Private Limited is a trusted name in the field of Data Recovery and Data Protection Software for more than a decade.

We provide the widest range of Data Recovery Products. Our range includes Data Recovery Software for almost all Operating Systems and File Systems.

Product line:

Data Recovery

A widest range of data recovery software that helps you recover your valued data lost after accidental format, virus problems, software malfunction, file/directory deletion, or even sabotage!. [More Info >>](#)

File Recovery

The most comprehensive range of file undelete and unerase software for Windows and MS office repair tools. [More Info >>](#)

E-mail Recovery

A wide range of e-mail recovery, e-mail repair and e-mail conversion applications for MS Outlook, MS Outlook Express and MS Exchange useful in instances of data loss due to damages and corruption of E-mail. [More Info >>](#)

Data Protection

A wide range of Prevent Data Loss, Data backup and Hard Drive Monitoring Applications to ensure complete data protection against hard drive crash. [More Info >>](#)

Data Sanitization

Data cleanup and file eraser utility can delete selected folders, groups of files, entire logical drives, System Traces & Internet traces. Once the data have been removed using Stellar Wipe - Data File eraser utility, it is beyond recovery limits of any Data Recovery Software or utility. [More Info >>](#)

For more information about us, please visit www.stellarinfo.com